

**Client: Pure Health Peptides**  
 info@purehealthpeptides.com  
 www.purehealthpeptides.com

 Sample received: **04/17/26**  
 Analysis conducted: **04/29/26**

<b>Compound:</b>	Retatrutide	<b>CAS:</b>	2381089-83-2
<b>Batch/Lot #:</b>	SYN-040126	<b>Formula:</b>	C221H342N46O68
<b>Appearance:</b>	White lyophilized powder	<b>Mol Wt:</b>	4731.3 g/mol

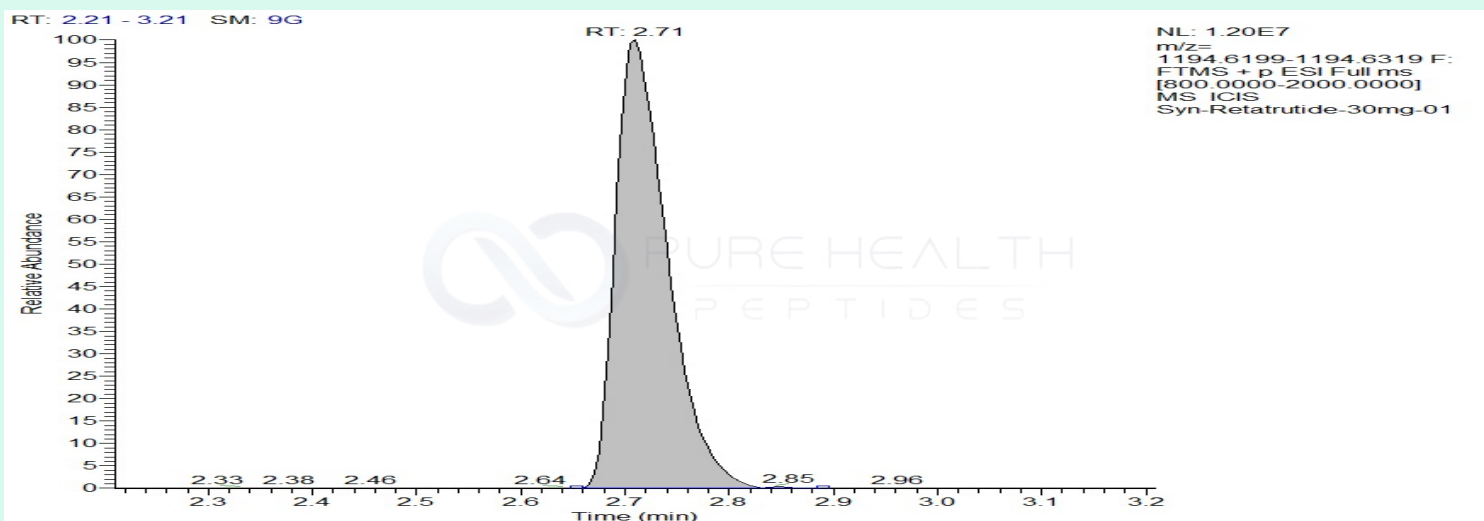
**Method:** Qualitative and Quantitative chemical analysis by Ultra High Performance Liquid Chromatography with Mass Spectrometry

**Pubchem CID:** 171390338

[Retatrutide |C221H342N46O68 |171390338](#)

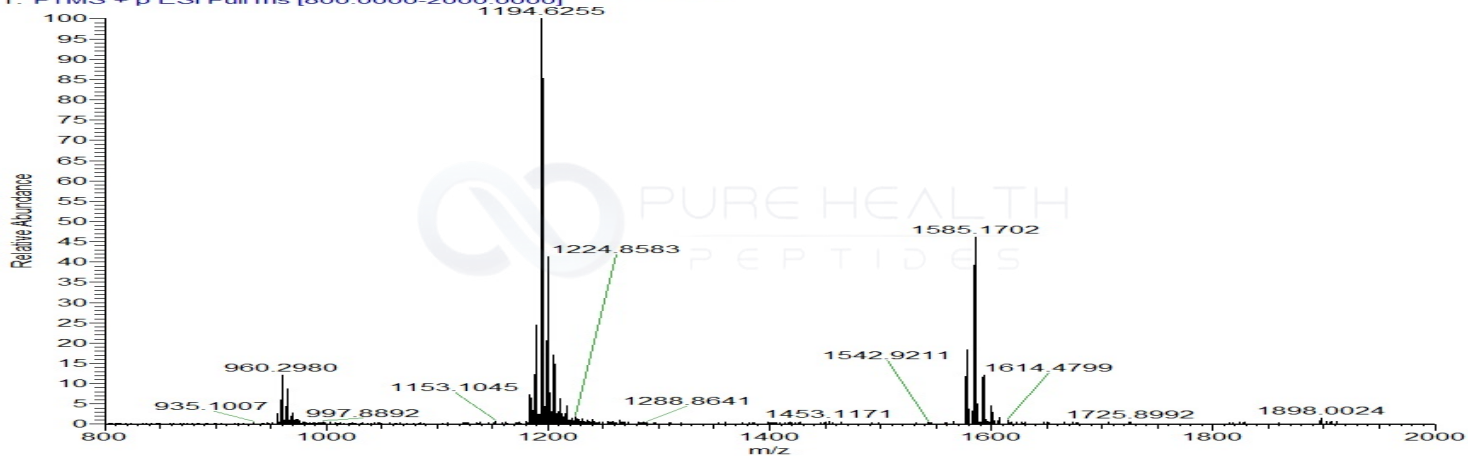
	Specification	Result	
<b>Identity Test:</b>	Retatrutide	<b>Retatrutide</b>	<b>Conforms</b>
<b>Quantity:</b>	30 mg	27.8 mg	<b>Conforms</b>
<b>Purity:</b>	>99%	<b>99.63%</b>	<b>Conforms</b>

### LC-MS Chromatogram and Retention Time Analysis

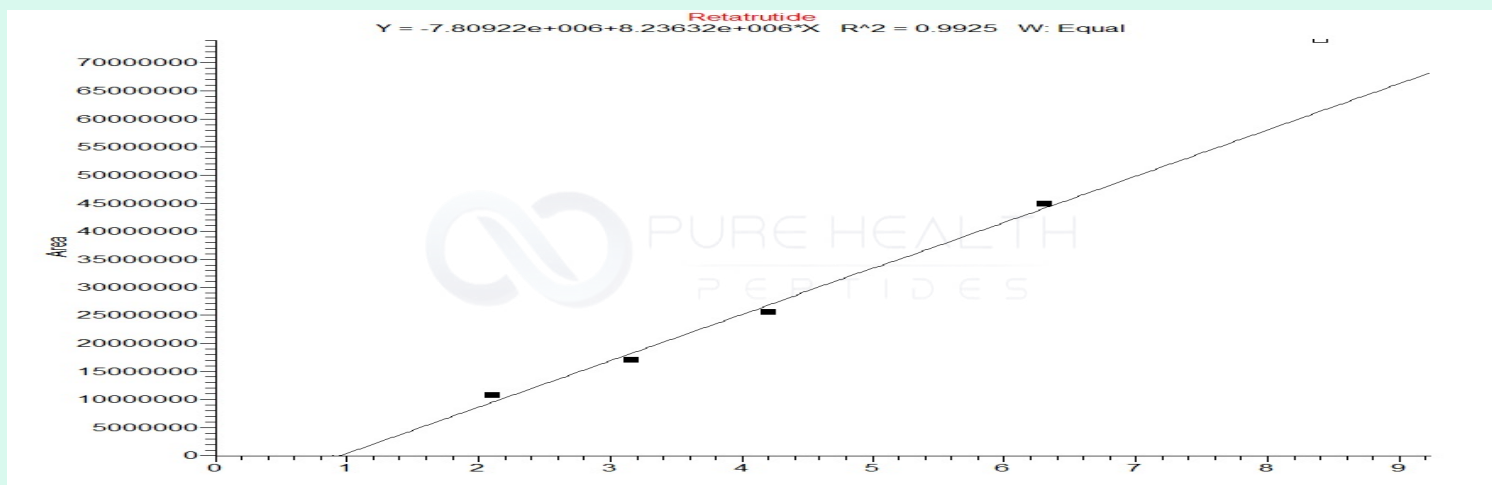


# Full Scan Mass Spectrometry Analysis

Syn-Retatrutide-30mg-01 #589 RT: 2.71 AV: 1 NL: 1.22E7  
T: FTMS + p ESI Full ms [800.0000-2000.0000]



## Calibration Curve



### Analysis Performed by

Dr. Victor Ugur  
Analytical Chemist  
contact@bioregen.com

COA #13002  
Security Key **PUREHEALTH**  
bioregen.com/verify



*Victor Ugur*