

**Client: Pure Health Peptides**  
info@purehealthpeptides.com  
www.purehealthpeptides.com

Sample received: **05/05/26**  
Analysis conducted: **05/22/26**

<b>Compound:</b>	BPC-157	<b>CAS:</b>	137525-51-0
<b>Batch/Lot #:</b>	SYN-040126	<b>Formula:</b>	C62H98N16O22
<b>Appearance:</b>	White lyophilized powder	<b>Mol Wt:</b>	1419.5 g/mol

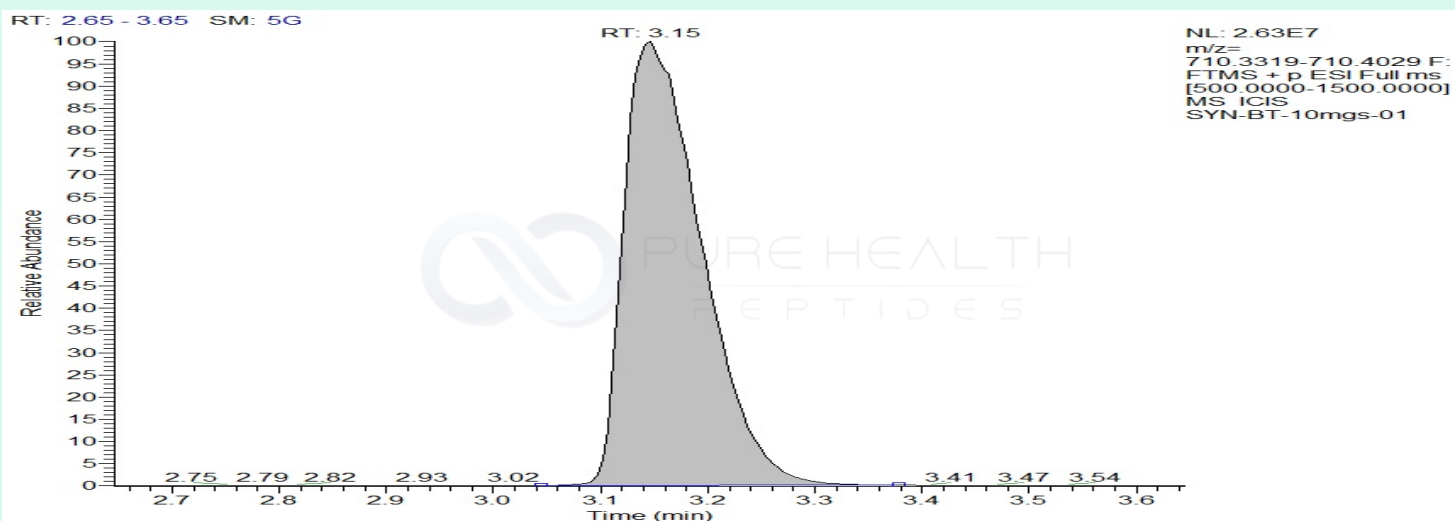
**Method:** Qualitative and Quantitative chemical analysis by Ultra High Performance Liquid Chromatography with Mass Spectrometry

**Pubchem CID:** 9941957

[BPC 157](#) | [C62H98N16O22](#) | [CID 9941957 - PubChem](#)

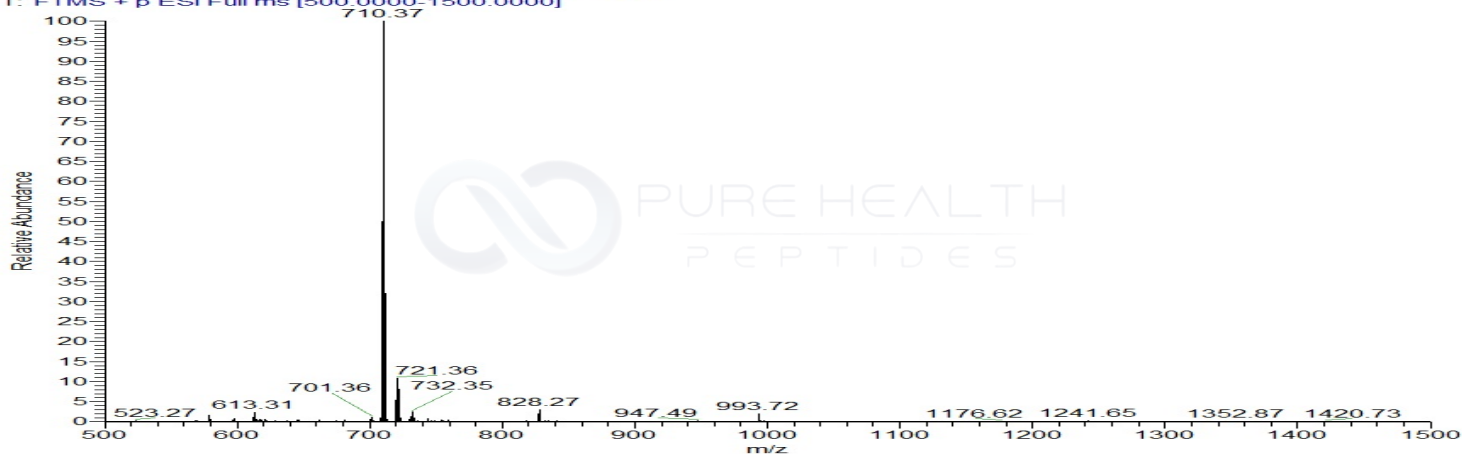
	Specification	Result	
<b>Identity Test:</b>	BPC 157	<b>BPC 157</b>	<b>Conforms</b>
<b>Quantity:</b>	10 mg	11.25 mg	<b>Conforms</b>
<b>Purity:</b>	>99%	<b>99.6%</b>	<b>Conforms</b>

### LC-MS Chromatogram and Retention Time Analysis

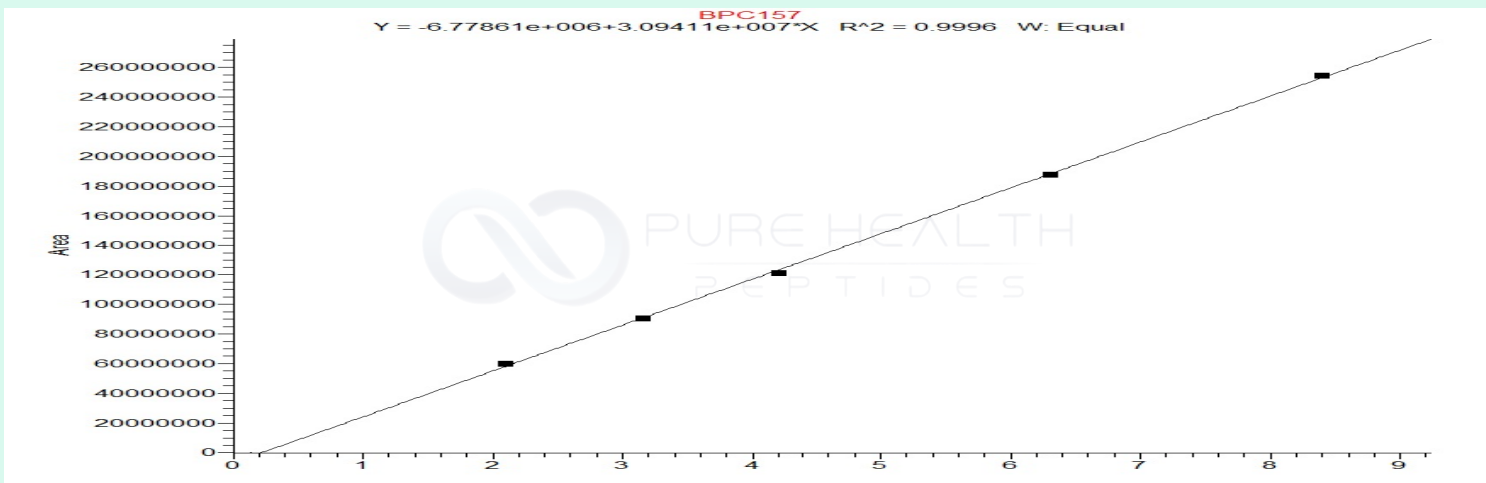


# Full Scan Mass Spectrometry Analysis

SYN-BT-10mgs-01 #661 RT: 3.15 AV: 1 NL: 2.59E7  
T: FTMS + p ESI Full ms [500.0000-1500.0000]



## Calibration Curve



### Analysis Performed by

Dr. Victor Ugur  
Analytical Chemist  
contact@bioregen.com

COA #13177

Security Key **PUREHEALTH**  
bioregen.com/verify



*Victor Ugur*

**Client: Pure Health Peptides**  
info@purehealthpeptides.com  
www.purehealthpeptides.com

Sample received: **05/05/26**  
Analysis conducted: **05/22/26**

Compound:	TB500 (TB4)	CAS:	77591-33-4
Batch/Lot #:	SYN-040126	Formula:	C212H350N56O78S
Appearance:	White lyophilized powder	Mol Wt:	4963 g/mol

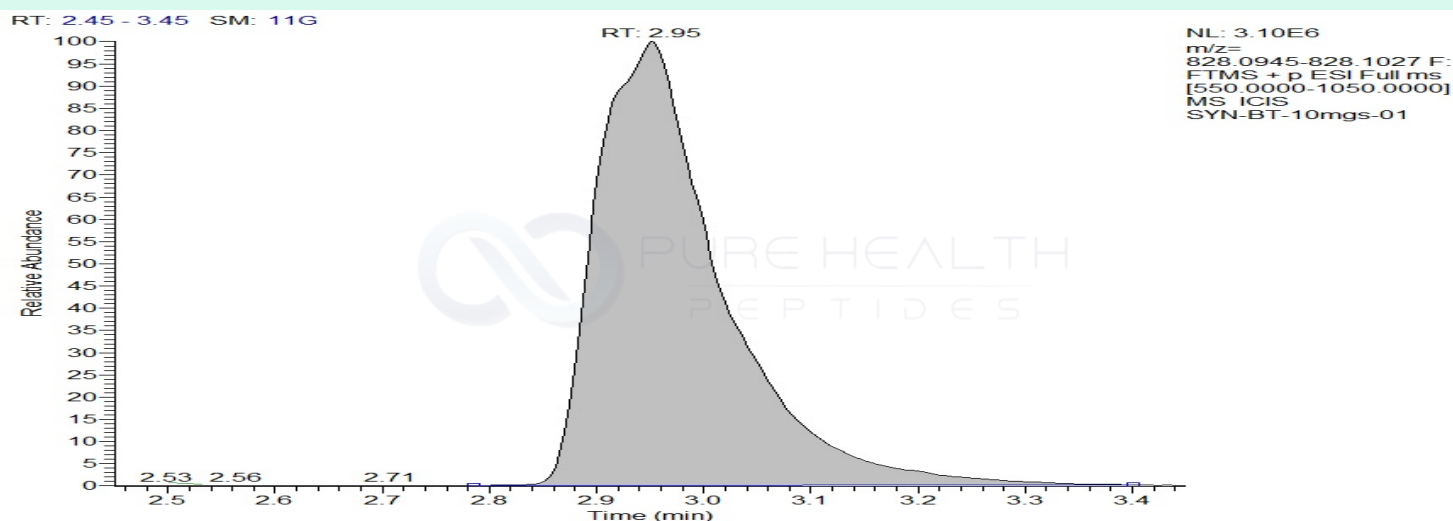
**Method:** Qualitative and Quantitative chemical analysis by Ultra High Performance Liquid Chromatography with Mass Spectrometry

**Pubchem CID:** 45382195

TB4 | C212H350N56O78S | 45382195

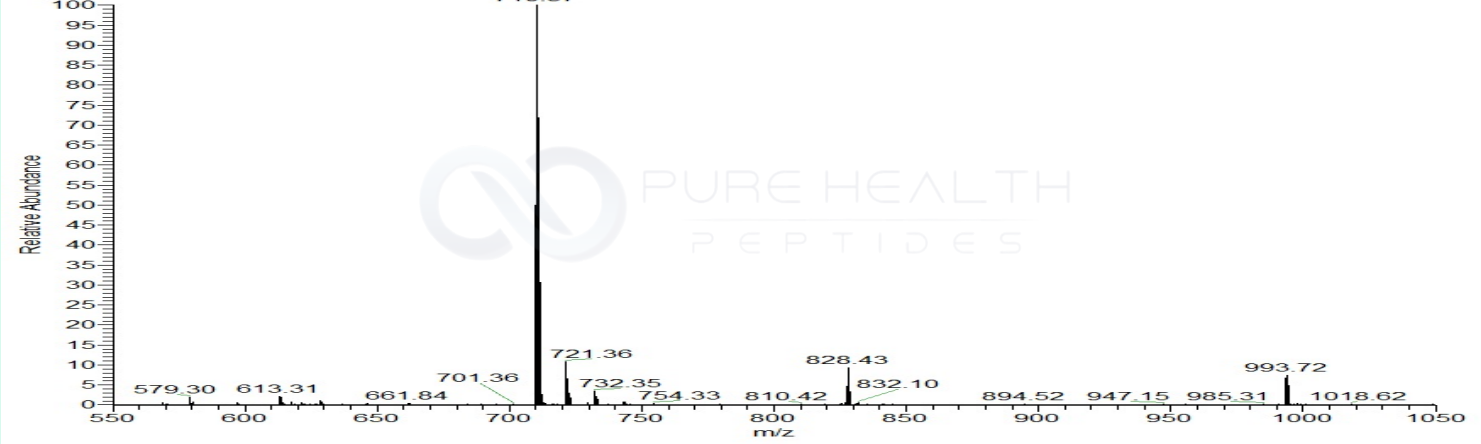
	Specification	Result	
Identity Test:	TB500 (TB4)	<b>TB4</b>	<b>Conforms</b>
Quantity:	10 mg	12.87 mg	<b>Conforms</b>
Purity:	>99%	<b>99.4%</b>	<b>Conforms</b>

### LC-MS Chromatogram: Retention Time and Peak Analysis

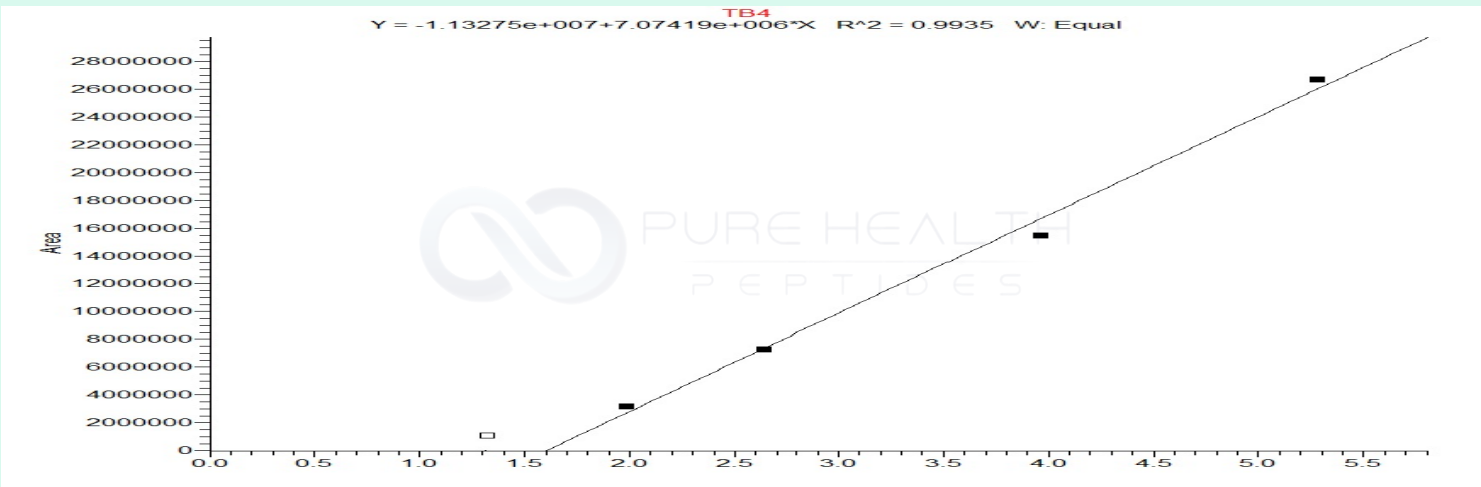


# Full Scan Mass Spectrometry Analysis

SYN-BT-10mgs-01 #620 RT: 2.95 AV: 1 NL: 3.51E7  
T: FTMS + p ESI Full ms [550.0000-1050.0000]



## Calibration Curve



### Analysis Performed by

Dr. Victor Ugur  
Analytical Chemist  
contact@bioregen.com

COA #13177  
Security Key **PUREHEALTH**  
bioregen.com/verify

