

**Client: Pure Health Peptides**  
 info@purehealthpeptides.com  
 www.purehealthpeptides.com

 Sample received: **05/18/26**  
 Analysis conducted: **06/01/26**

Compound:	Retatrutide	CAS:	2381089-83-2
Batch/Lot #:	SYN-040126	Formula:	C221H342N46O68
Appearance:	White lyophilized powder	Mol Wt:	4731.3 g/mol

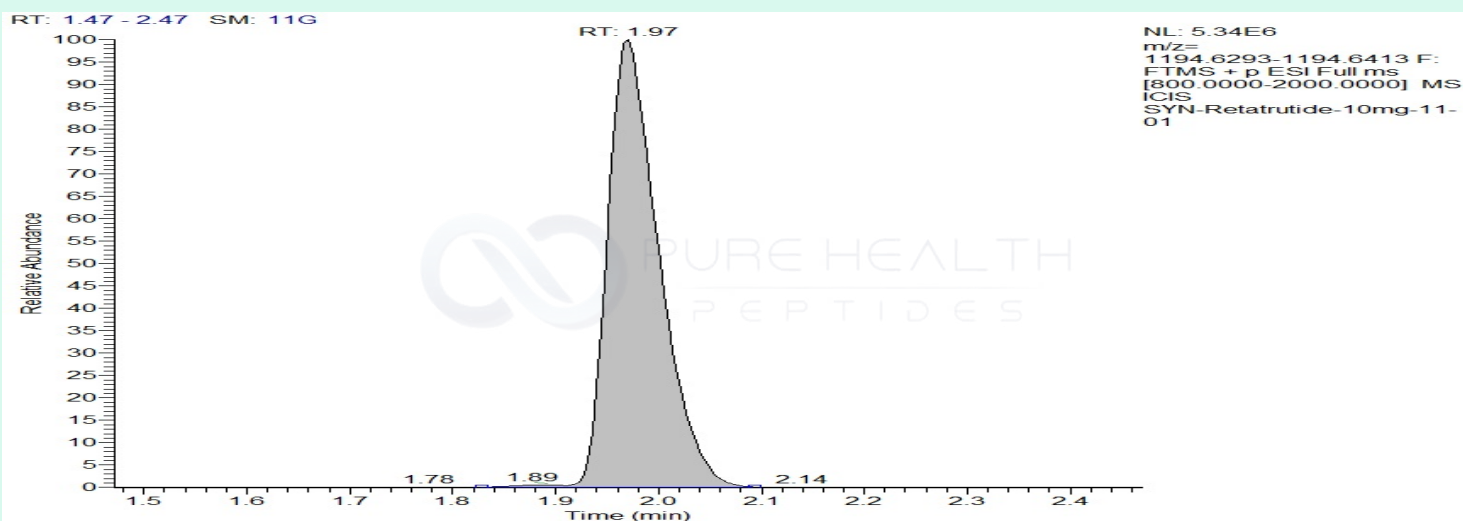
**Method:** Qualitative and Quantitative chemical analysis by Ultra High Performance Liquid Chromatography with Mass Spectrometry

**Pubchem CID:** 171390338

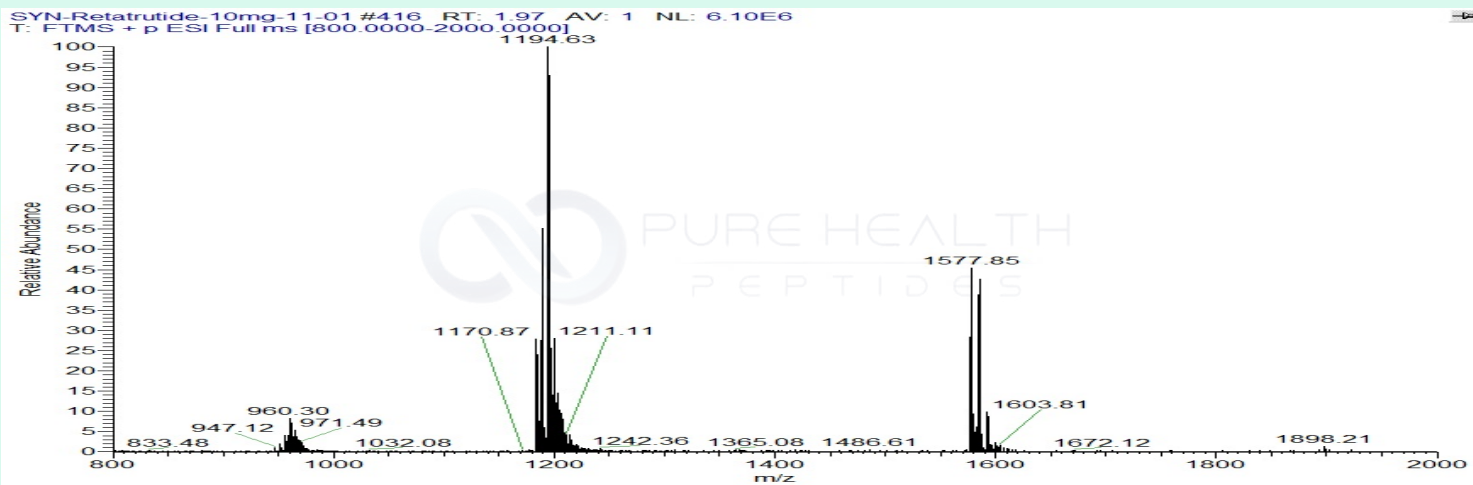
Retatrutide |C221H342N46O68 |171390338

	Specification	Result	
Identity Test:	Retatrutide	<b>Retatrutide</b>	<b>Conforms</b>
Quantity:	10 mg	11.88 mg	<b>Conforms</b>
Purity:	>99%	<b>99.6%</b>	<b>Conforms</b>

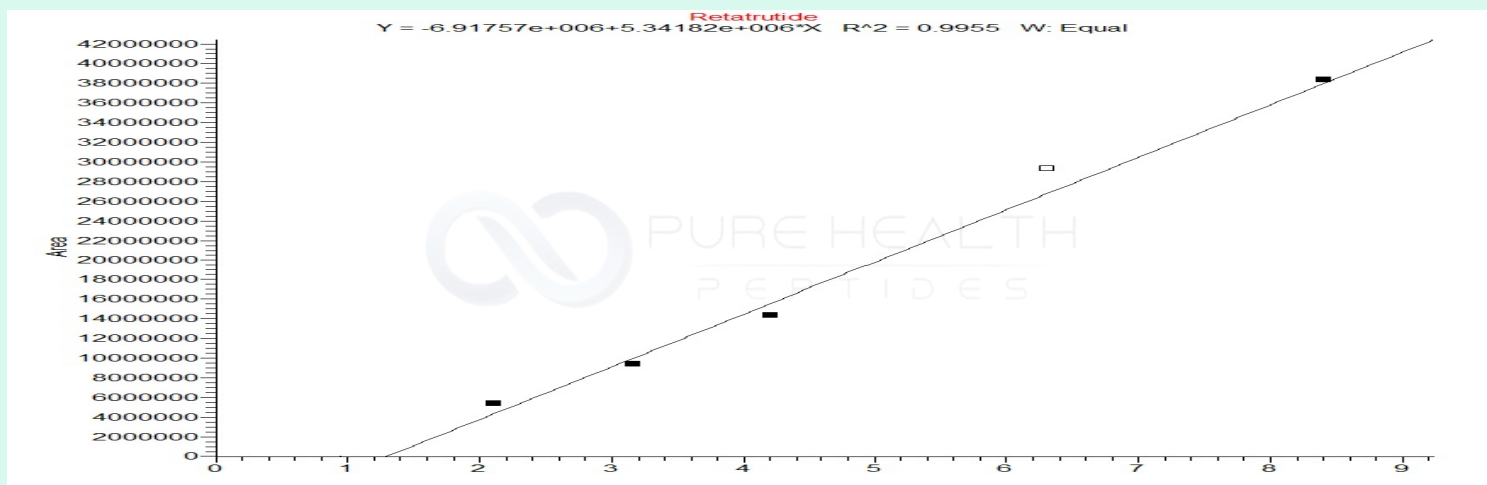
### LC-MS Chromatogram and Retention Time Analysis



# Full Scan Mass Spectrometry Analysis



## Calibration Curve



### Analysis Performed by

Dr. Victor Ugur  
Analytical Chemist  
contact@bioregen.com

COA #13269  
Security Key **PUREHEALTH**  
bioregen.com/verify



*Victor Ugur*