

Client: Pure Health Peptides
 info@purehealthpeptides.com
 www.purehealthpeptides.com

 Sample received: **04/21/26**
 Analysis conducted: **04/29/26**

Compound:	Retatrutide	CAS:	2381089-83-2
Batch/Lot #:	SYN-040126	Formula:	C221H342N46O68
Appearance:	White lyophilized powder	Mol Wt:	4731.3 g/mol

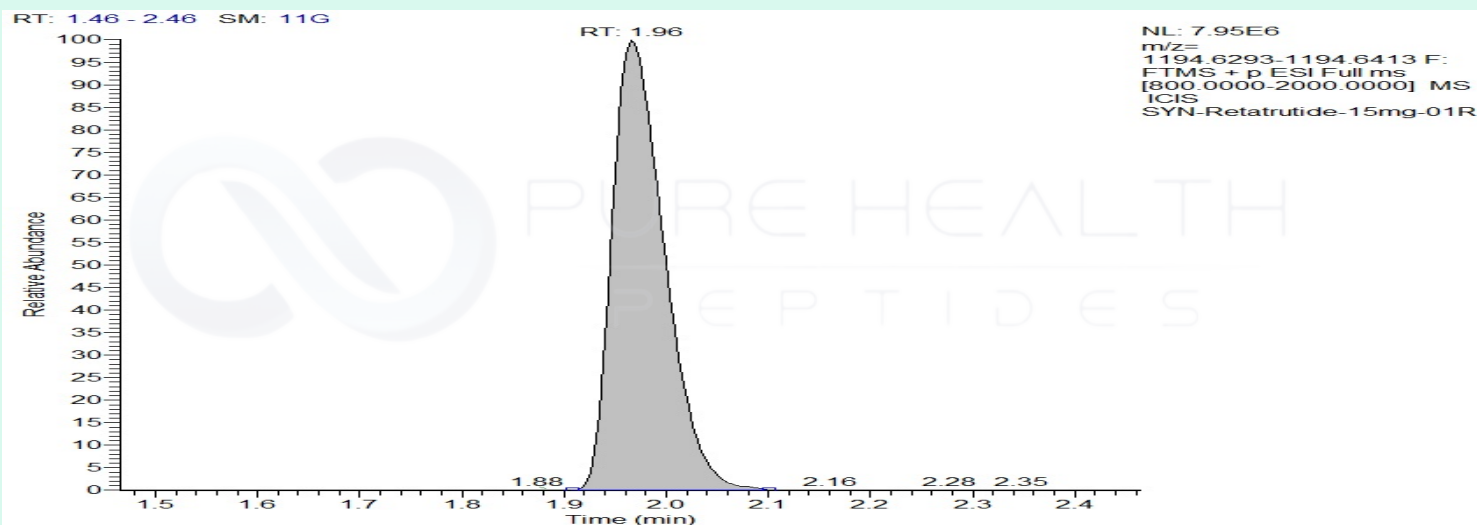
Method: Qualitative and Quantitative chemical analysis by Ultra High Performance Liquid Chromatography with Mass Spectrometry

Pubchem CID: 171390338

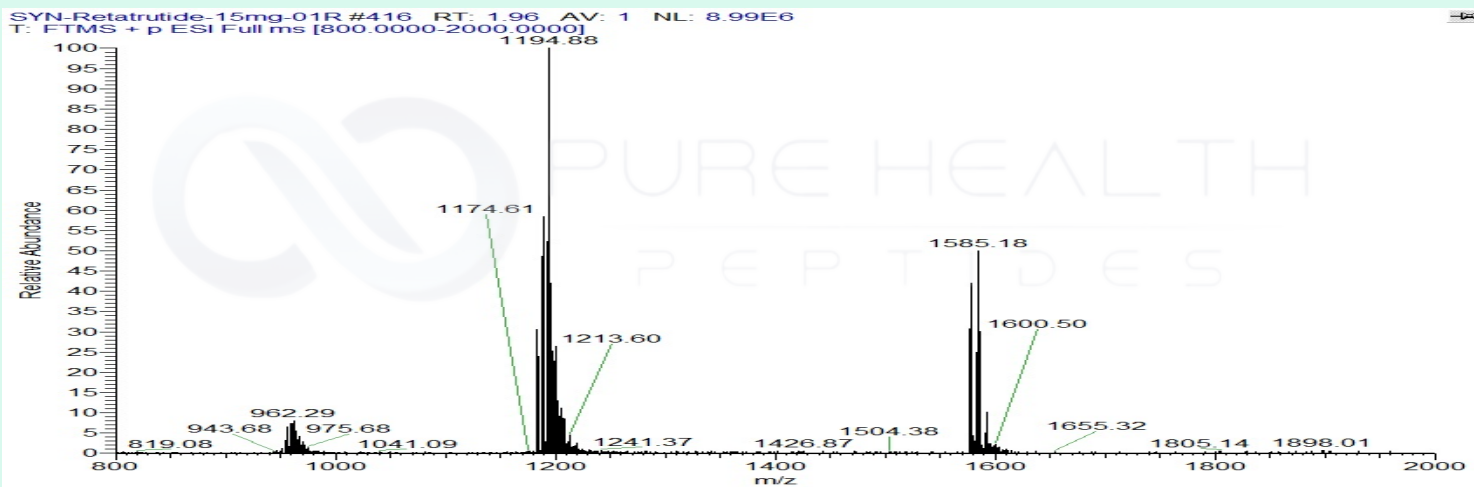
[Retatrutide |C221H342N46O68 |171390338](#)

	Specification	Result	
Identity Test:	Retatrutide	Retatrutide	Conforms
Quantity:	15 mg	16.07 mg	Conforms
Purity:	>99%	99.44%	Conforms

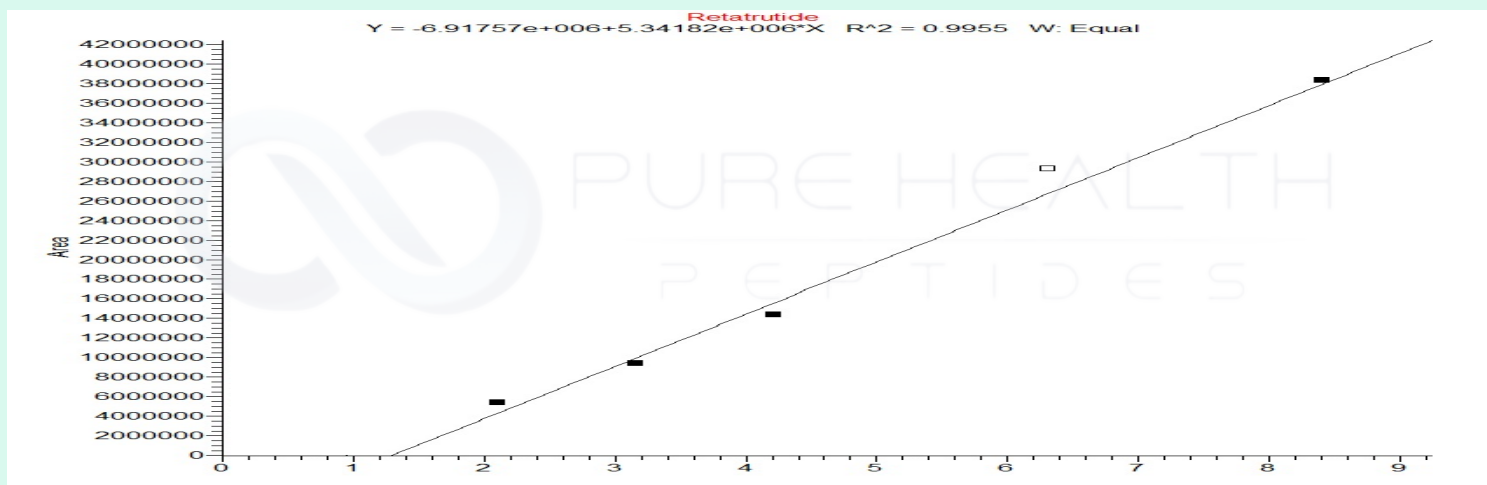
LC-MS Chromatogram and Retention Time Analysis



Full Scan Mass Spectrometry Analysis



Calibration Curve



Analysis Performed by

Dr. Victor Ugur
Analytical Chemist
contact@bioregen.com

COA #13271
Security Key **PUREHEALTH**
bioregen.com/verify

