

Client: Pure Health Peptides
info@purehealthpeptides.com
www.purehealthpeptides.com

Sample received: **04/07/26**
Analysis conducted: **04/16/26**

Compound:	GLOW	CAS:	137525-51-0
Batch/Lot #:	TUY-030926	Formula:	C62H98N16O22
Appearance:	White lyophilized powder	Mol Wt:	1419.5 g/mol

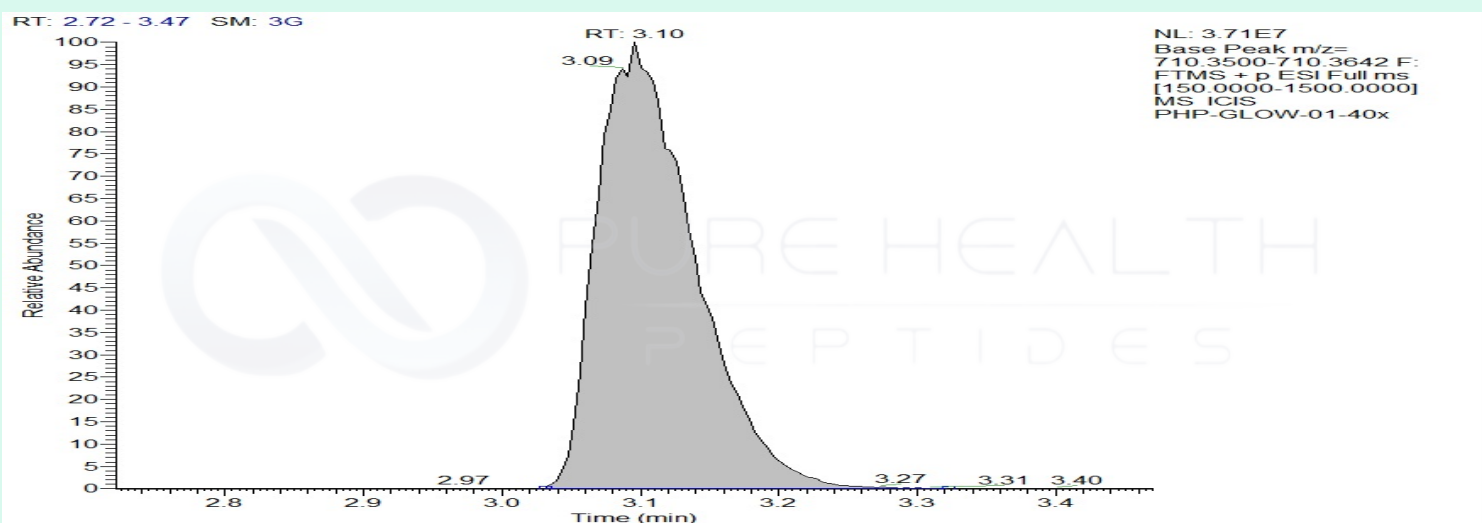
Method: Qualitative and Quantitative chemical analysis by Ultra High Performance Liquid Chromatography with Mass Spectrometry

Pubchem CID: 9941957

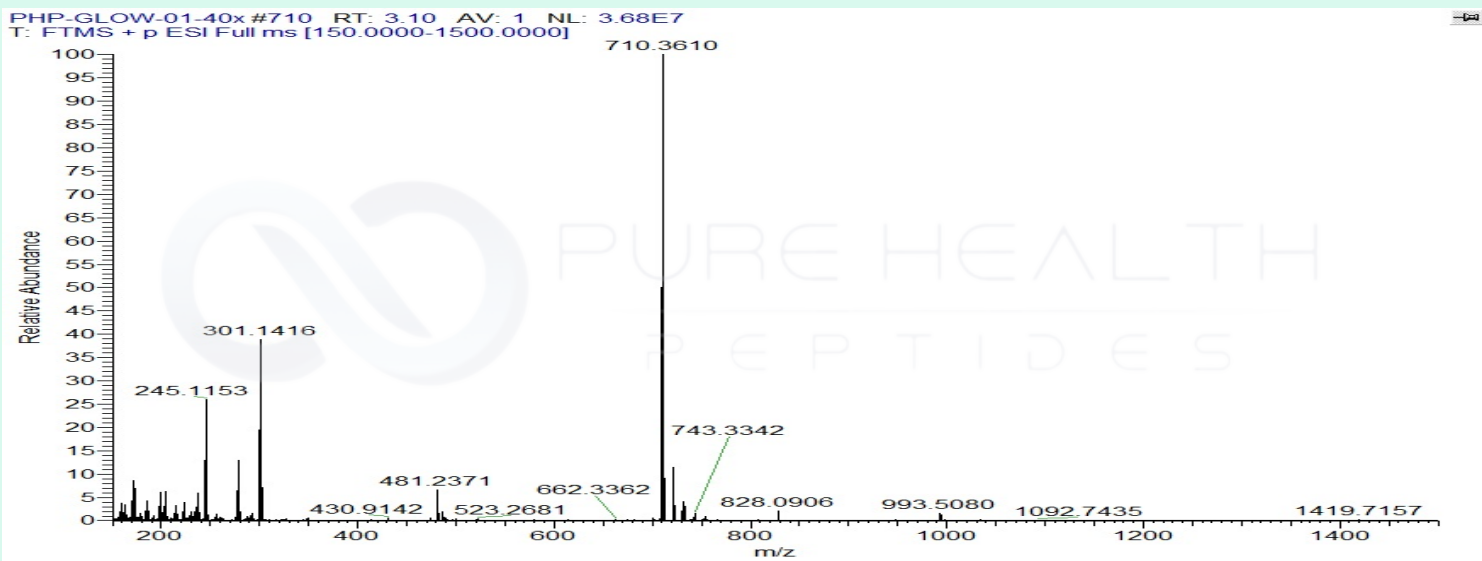
[BPC 157](#) | [C62H98N16O22](#) | [CID 9941957 - PubChem](#)

	Specification	Result	
Identity Test:	BPC 157	BPC 157	Conforms
Quantity:	5 mg	6.2 mg	Conforms
Purity:	>99%	99.23%	Conforms

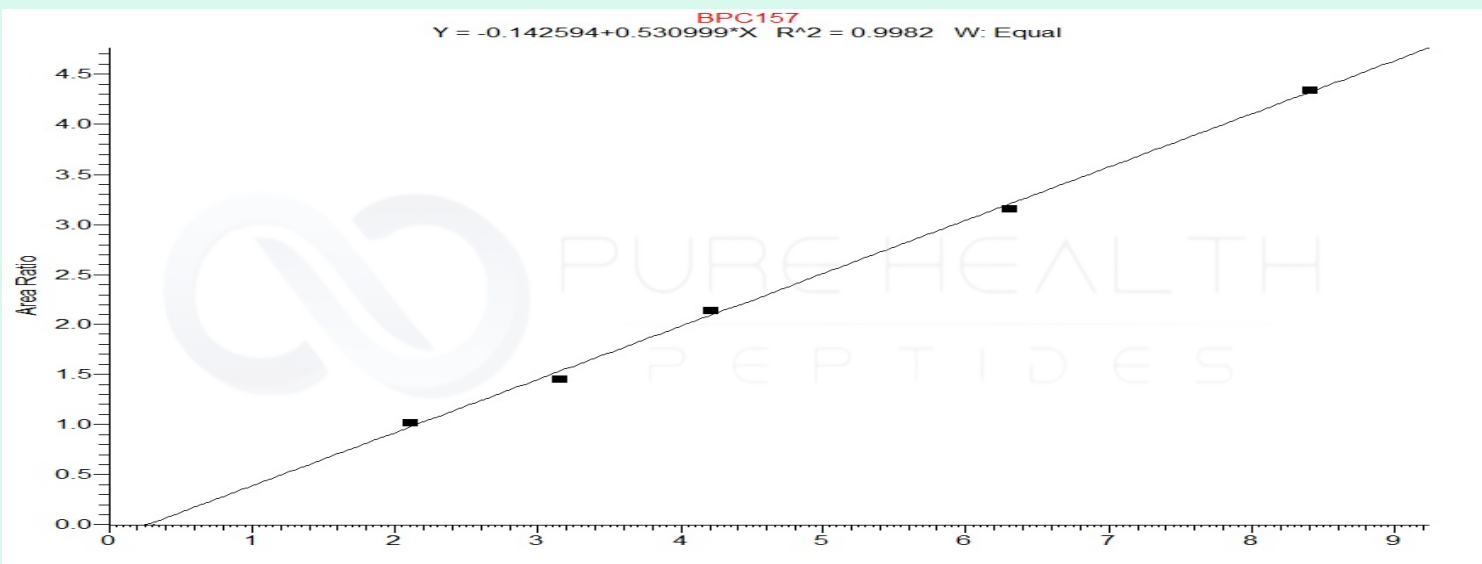
LC-MS Chromatogram and Retention Time Analysis



Full Scan Mass Spectrometry Analysis



Calibration Curve



Analysis Performed by
Dr. Victor Ugur
Analytical Chemist
contact@bioregen.com

COA #12836
Security Key **PUREHEALTH**
bioregen.com/verify



Client: Pure Health Peptides
 info@purehealthpeptides.com
 www.purehealthpeptides.com

 Sample received: **04/07/26**
 Analysis conducted: **04/16/26**

Compound:	GLOW	CAS:	49557-75-7
Batch/Lot #:	TUY-030926	Formula:	C14H24N6O4
Appearance:	Blue lyophilized powder	Mol Wt:	340.38 g/mol

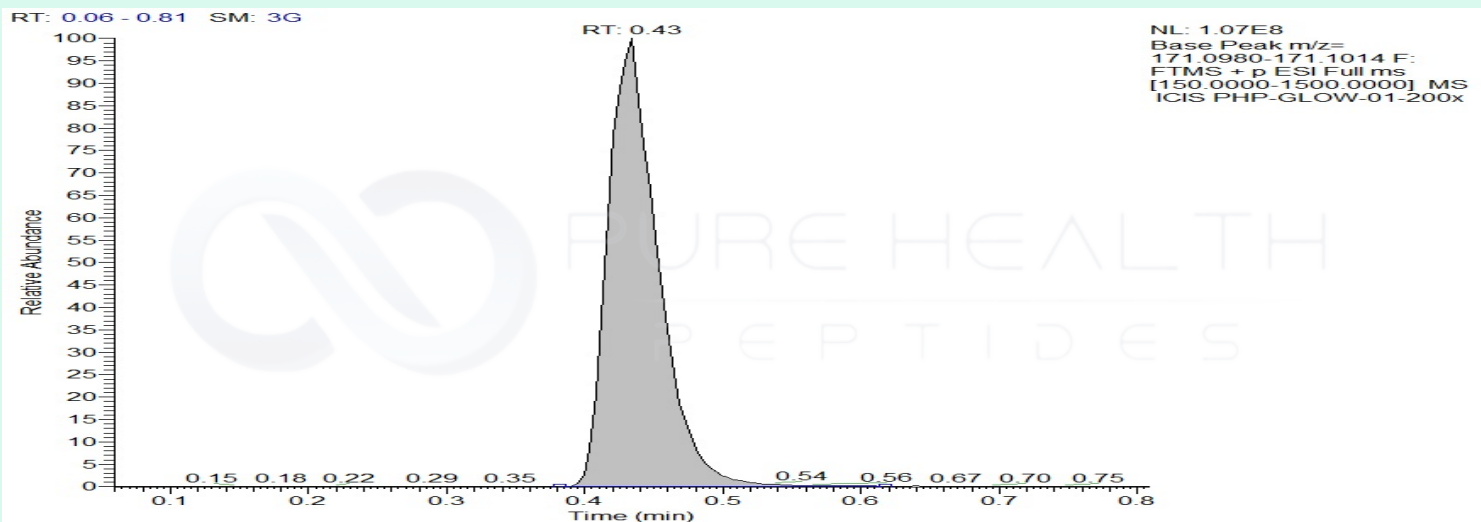
Method: Qualitative and Quantitative chemical analysis by Ultra High Performance Liquid Chromatography with Mass Spectrometry

Pubchem CID: 73587

GHK-Cu | C14H24N6O4 | CID 73587

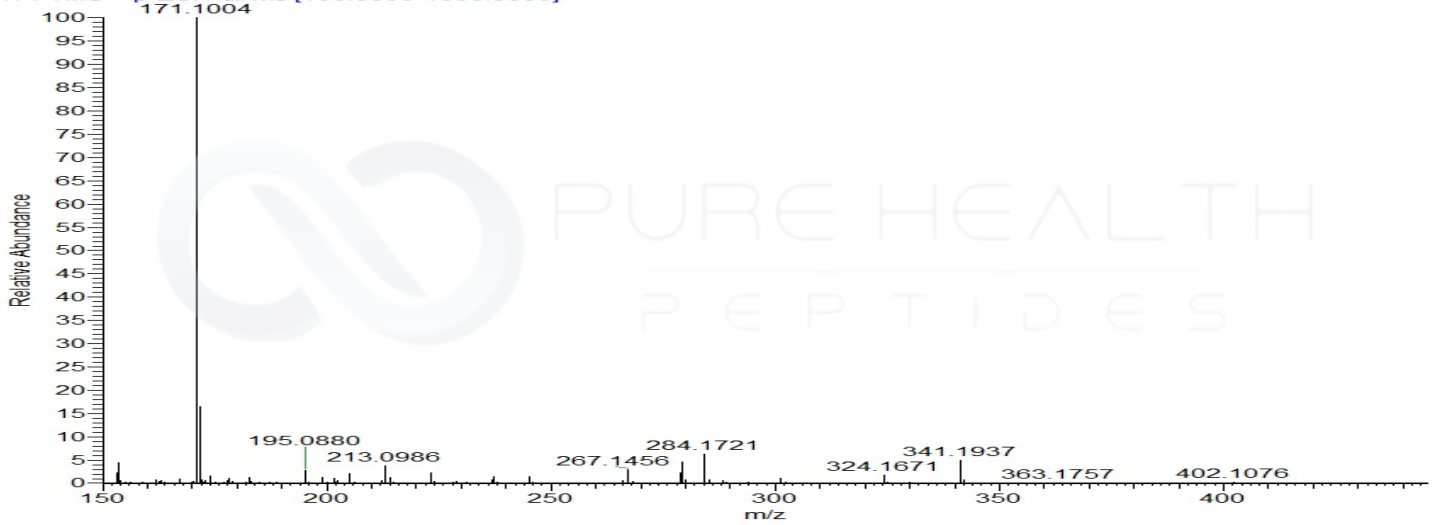
	Specification	Result	
Identity Test:	GHK-Cu	GHK-Cu	Conforms
Quantity:	50 mg	54.9 mg	Conforms
Purity:	>99%	99.58%	Conforms

LC-MS Chromatogram: Retention Time and Peak Analysis

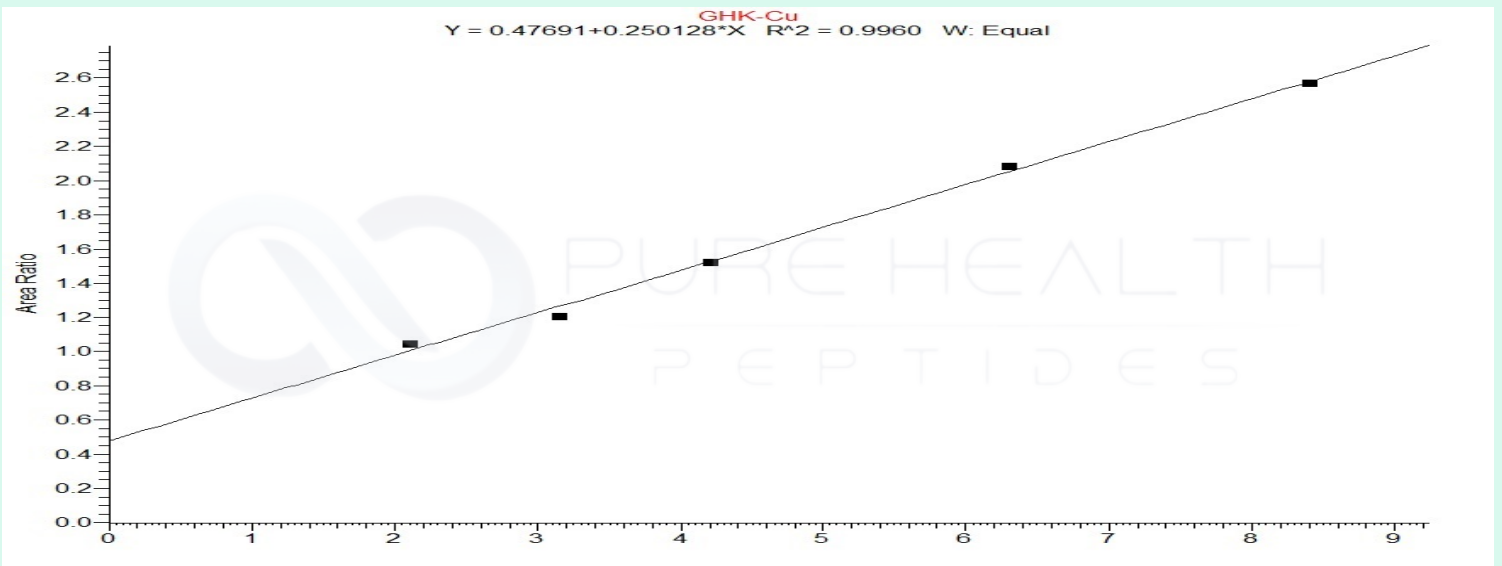


Full Scan Mass Spectrometry Analysis

PHP-GLOW-01-200x#100 RT: 0.43 AV: 1 NL: 1.02E8
T: FTMS + p ESI Full ms [150.0000-1500.0000]



Calibration Curve



Analysis Performed by

Dr. Victor Ugur
Analytical Chemist
contact@bioregen.com

COA #12836
Security Key **PUREHEALTH**
bioregen.com/verify



Victor Ugur

Client: Pure Health Peptides
 info@purehealthpeptides.com
 www.purehealthpeptides.com

 Sample received: **04/07/26**
 Analysis conducted: **04/16/26**

Compound:	GLOW	CAS:	885340-08-9
Batch/Lot #:	TUY-030926	Formula:	C38H68N10O14
Appearance:	white lyophilized powder	Mol Wt:	889.0 g/mol

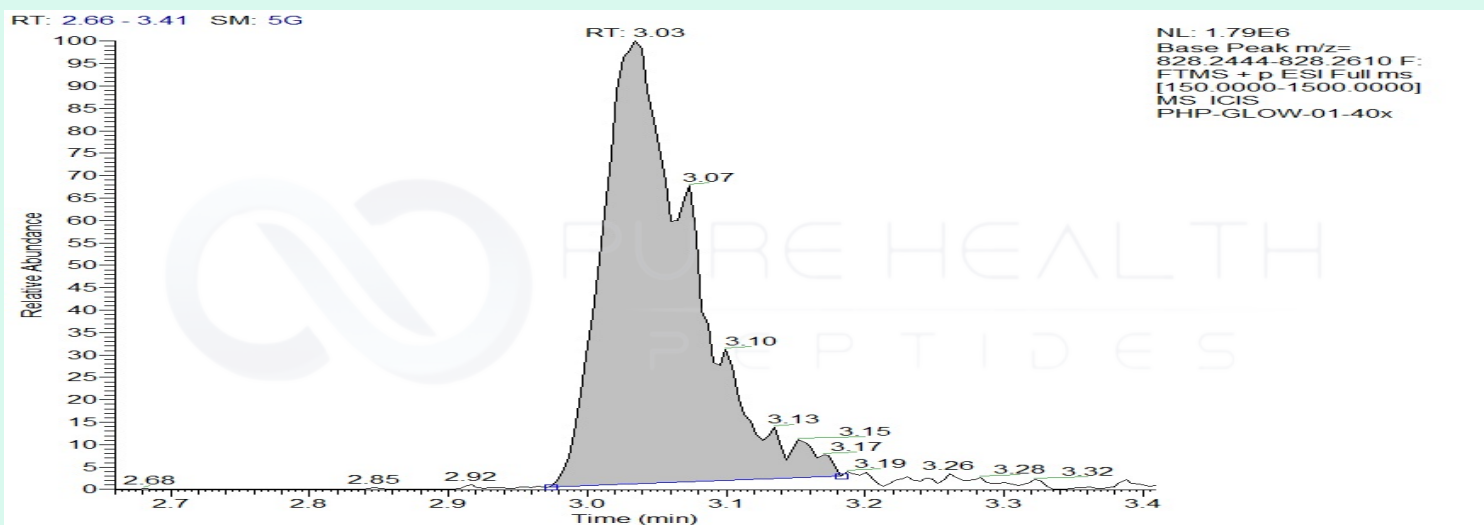
Method: Qualitative and Quantitative chemical analysis by Ultra High Performance Liquid Chromatography with Mass Spectrometry

Pubchem CID: 62707662

TB-500 | C38H68N10O14 | CID 62707662

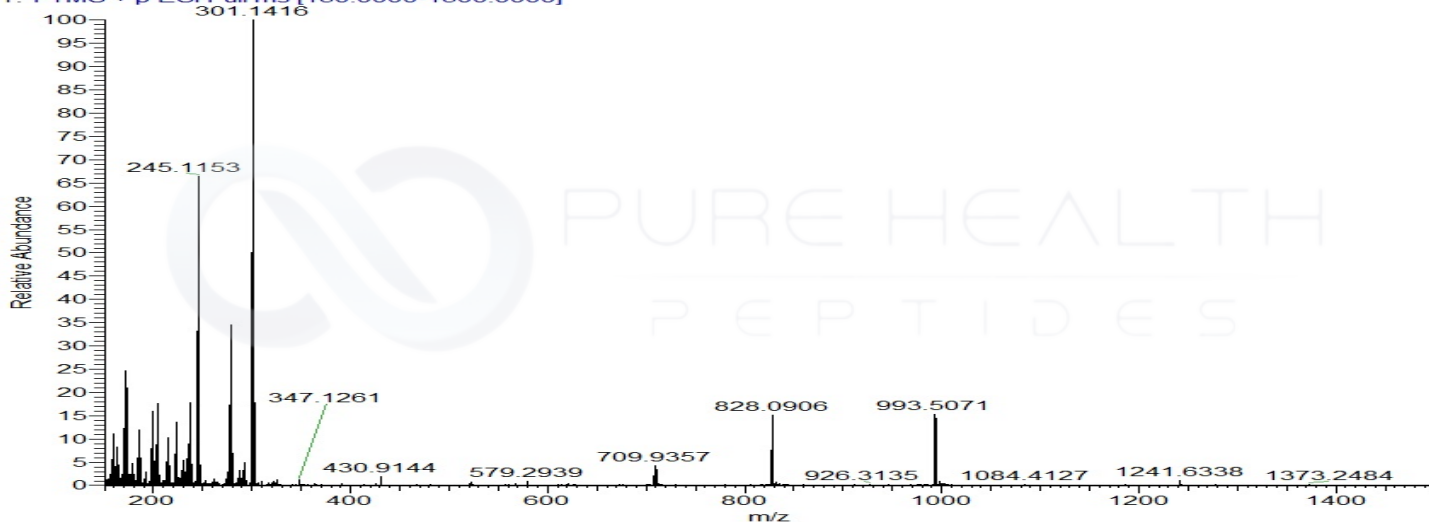
	Specification	Result	
Identity Test:	TB500	TB500 (TB4)	Conforms
Quantity:	2 mg	2.3 mg	Conforms
Purity:	>99%	99.42%	Conforms

LC-MS Chromatogram: Retention Time and Peak Analysis

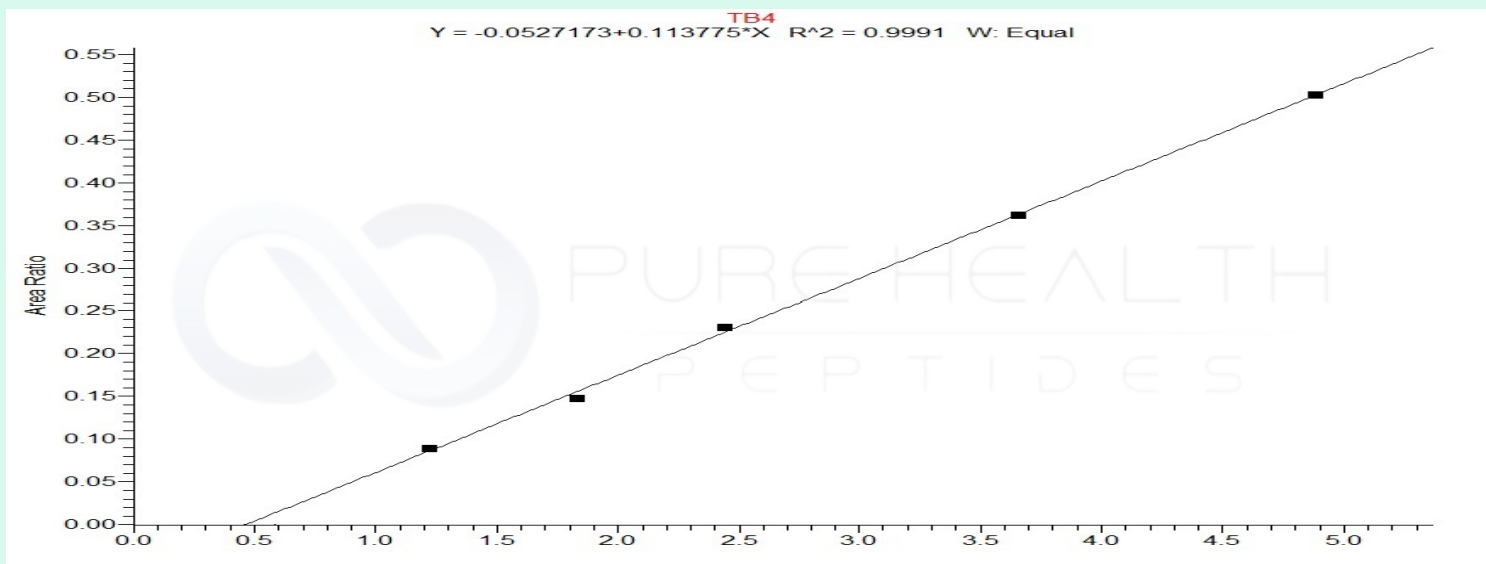


Full Scan Mass Spectrometry Analysis

PHP-GLOW-01-40x #696 RT: 3.03 AV: 1 NL: 1.21E7
T: FTMS + p ESI Full ms [150.0000-1500.0000]



Calibration Curve



Analysis Performed by
Dr. Victor Ugur
Analytical Chemist
contact@bioregen.com

COA #12836
Security Key **PUREHEALTH**
bioregen.com/verify



Victor Ugur