

Client: **Pure Health Peptides**  
 info@purehealthpeptides.com  
 www.purehealthpeptides.com

Sample received: **03/18/26**  
 Analysis conducted: **03/20/26**

Compound:	KPV	CAS:	67727-97-3
Batch/Lot #:	SYN-030926	Formula:	C16H30N4O4
Appearance:	White lyophilized powder	Mol Wt:	342.43 g/mol

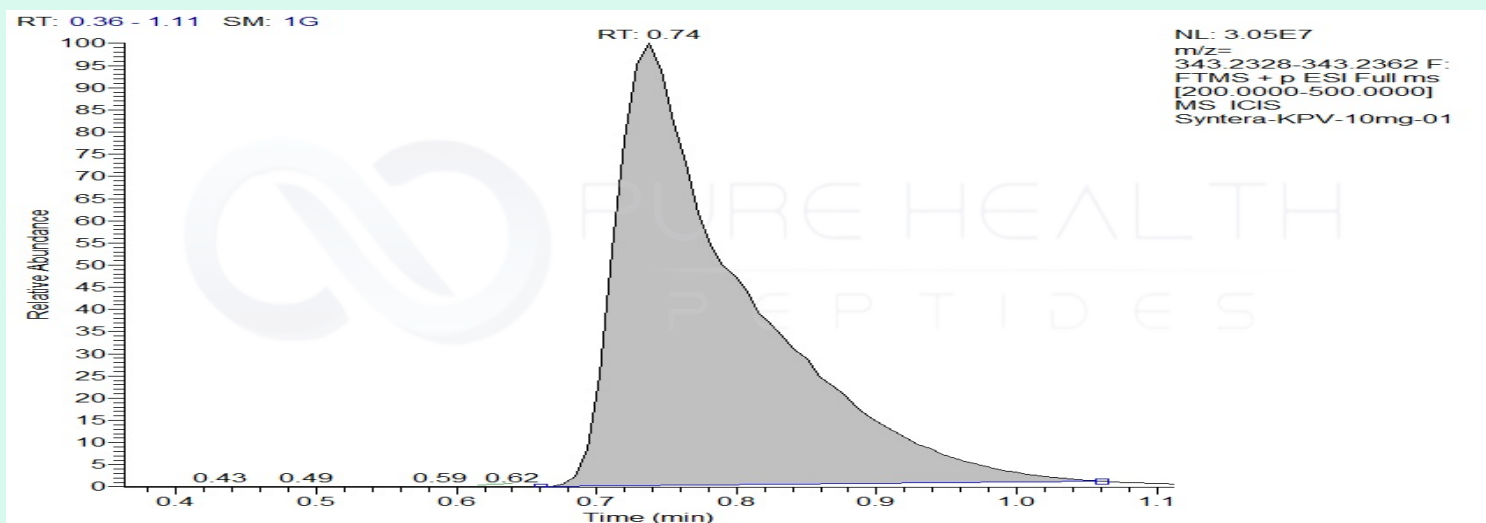
**Method:** Qualitative and Quantitative chemical analysis by Ultra High Performance Liquid Chromatography with Mass Spectrometry

**Pubchem CID:** 125672

KPV | C16H30N4O4 | CID 125672

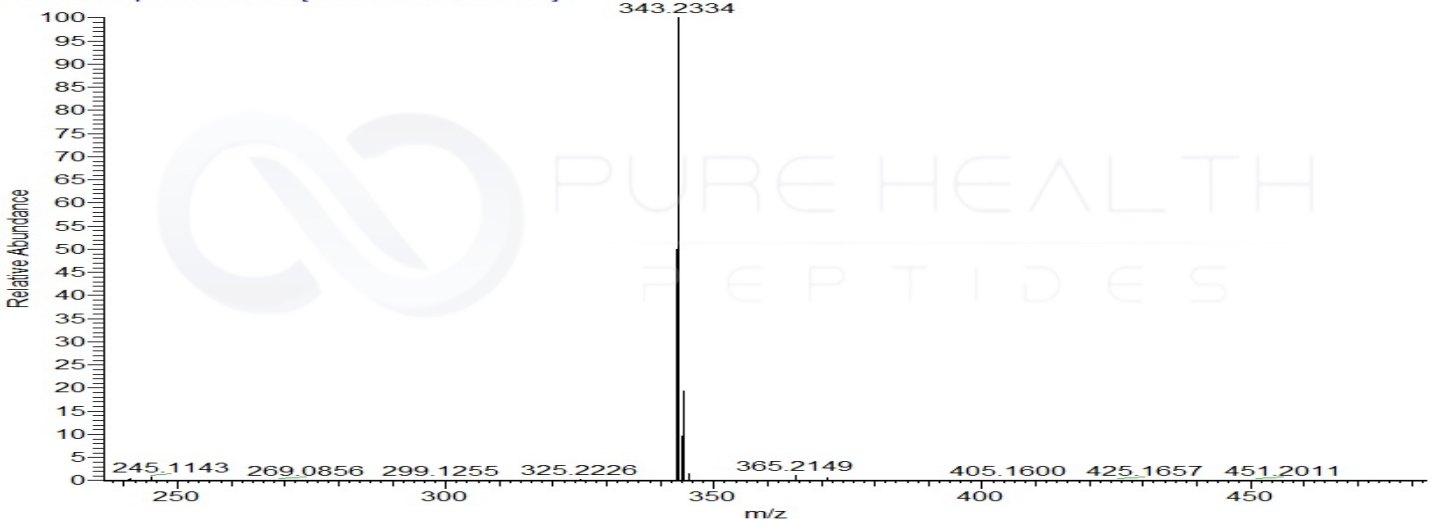
	Specification	Result	
Identity Test:	KPV	<b>KPV</b>	<b>Conforms</b>
Quantity:	10 mg	9.8 mg	<b>Conforms</b>
Purity:	>99%	<b>99.43%</b>	<b>Conforms</b>

### LC-MS Chromatogram: Retention Time and Peak Analysis

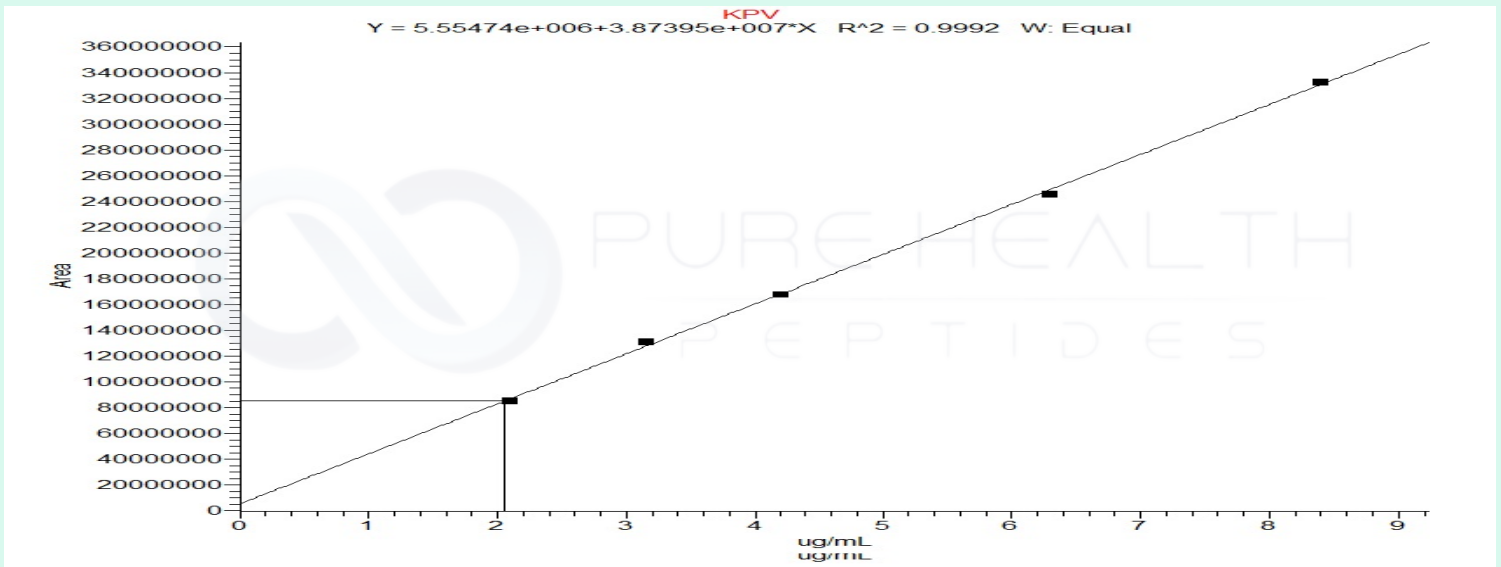


## Full Scan Mass Spectrometry Analysis

Syntera-KPV-10mg-01 #85 RT: 0.74 AV: 1 NL: 2.89E7  
T: FTMS + p ESI Full ms [200.0000-500.0000]



## Calibration Curve



### Analysis Performed by

Dr. Roberto Marin  
Analytical Chemist  
contact@bioregen.com

COA #12533  
Security Key **PUREHEALTH**  
bioregen.com/verify

*Roberto Marin*

