

Client: **Pure Health Peptides**
 info@purehealthpeptides.com
 www.purehealthpeptides.com

Sample received: **03/12/26**
 Analysis conducted: **03/12/26**

Compound:	Retatrutide	CAS:	2381089-83-2
Batch/Lot #:	SYN-030926	Formula:	C221H342N46O68
Appearance:	White lyophilized powder	Mol Wt:	4845.444 g/mol

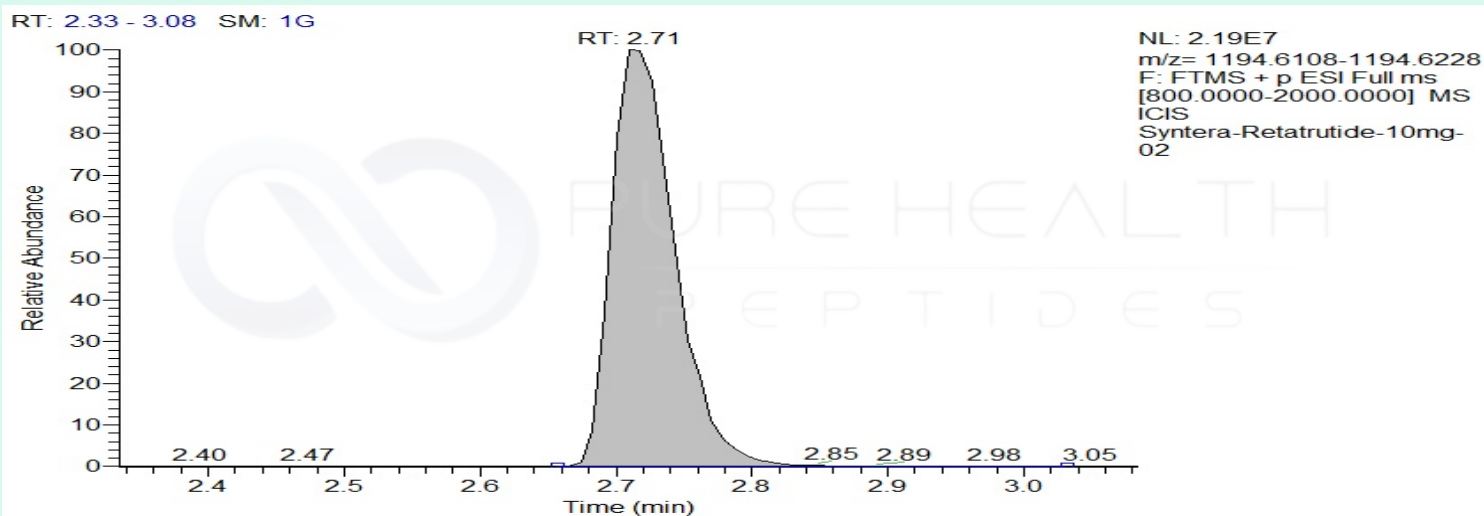
Method: Qualitative and Quantitative chemical analysis by Ultra High Performance Liquid Chromatography with Mass Spectrometry

Pubchem CID: 171390338

Retatrutide | C221H342N46O68 | Pubchem CID 171390338

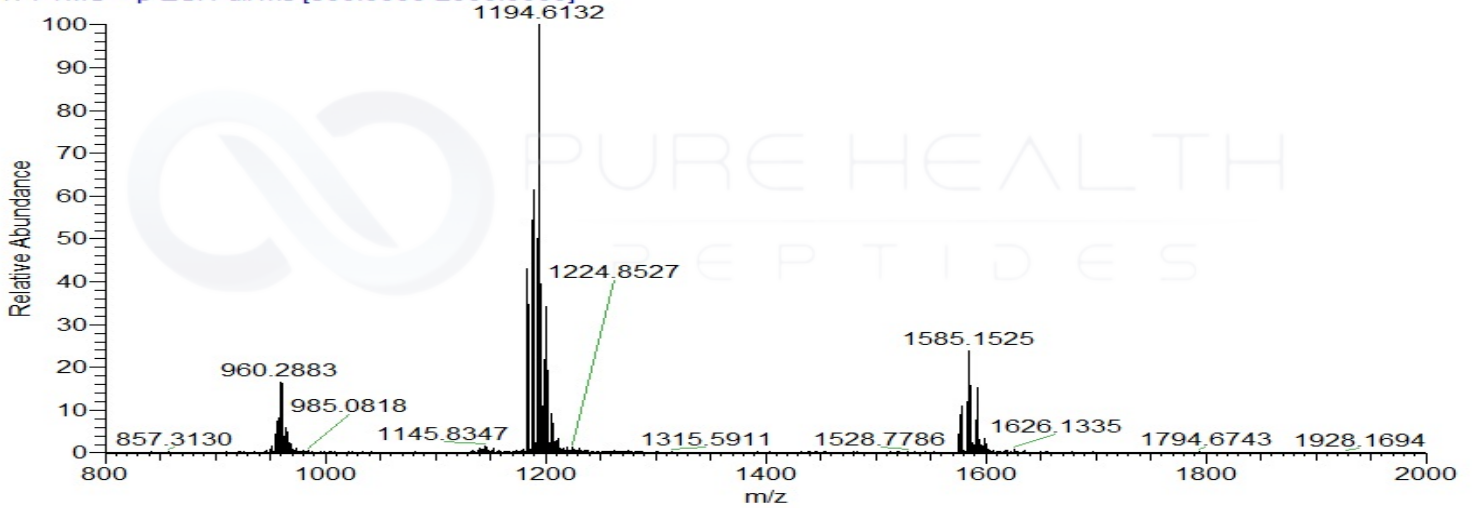
	Specification	Result	
Identity Test:	Retatrutide	Retatrutide	Conforms
Quantity:	10 mg	13.0 mg	Over-Conforming
Purity:	>99%	99.43%	Conforms

LC-MS Chromatogram: Retention Time and Peak Analysis

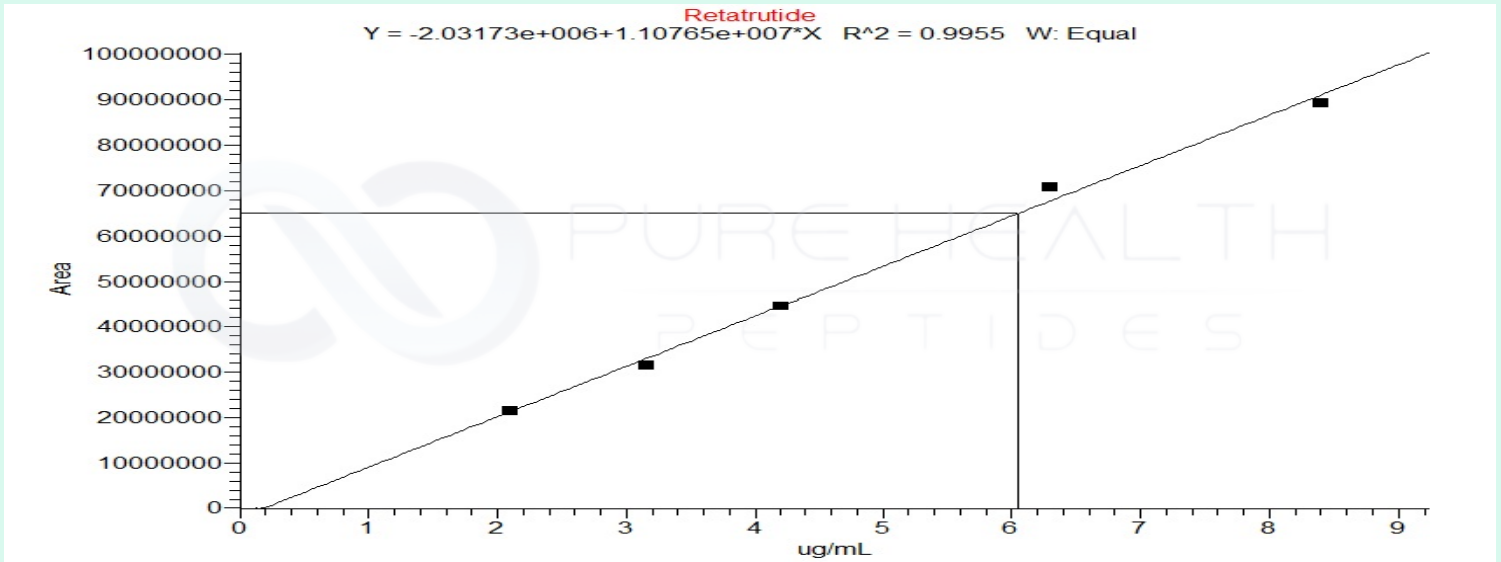


Full Scan Mass Spectrometry Analysis

Syntera-Retatrutide-10mg-02 #311 RT: 2.71 AV: 1 NL: 2.10E7
T: FTMS + p ESI Full ms [800.0000-2000.0000]



Calibration Curve



Analysis Performed by

Dr. Roberto Marin
Analytical Chemist
contact@bioregen.com

COA #12494
Security Key **PUREHEALTH**
bioregen.com/verify



Roberto Marin