

Client: **Pure Health Peptides**  
 info@purehealthpeptides.com  
 www.purehealthpeptides.com

Sample received: **03/02/26**  
 Analysis conducted: **03/03/26**

Compound:	BPC-157/TB4 Blend	CAS:	137525-51-0
Batch/Lot #:	SYN-022626	Formula:	C62H98N16O22
Appearance:	White lyophilized powder	Mol Wt:	1419.5 g/mol

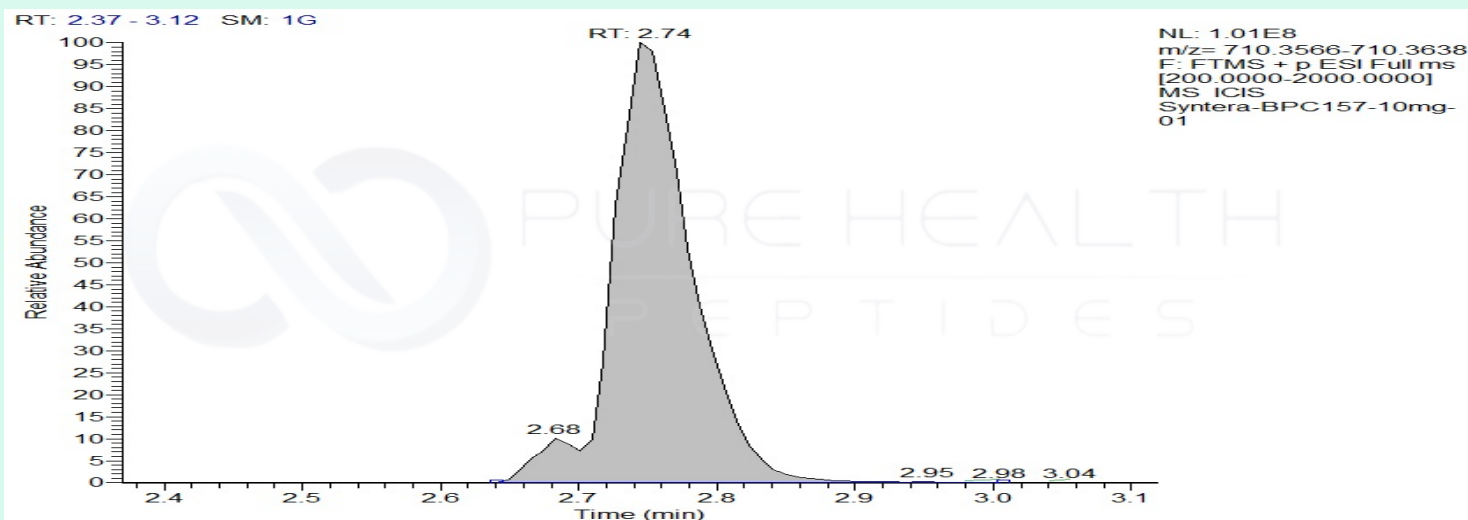
**Method:** Qualitative and Quantitative chemical analysis by Ultra High Performance Liquid Chromatography with Mass Spectrometry

**Pubchem CID:** 9941957

[BPC 157](#) | [C62H98N16O22](#) | [CID 9941957](#) - PubChem

	Specification	Result	
Identity Test:	BPC 157	<b>BPC 157</b>	<b>Conforms</b>
Quantity:	10 mg	12.29 mg	<b>Conforms</b>
Purity:	>99%	<b>99.72%</b>	<b>Conforms</b>

### LC-MS Chromatogram: Retention Time and Peak Analysis



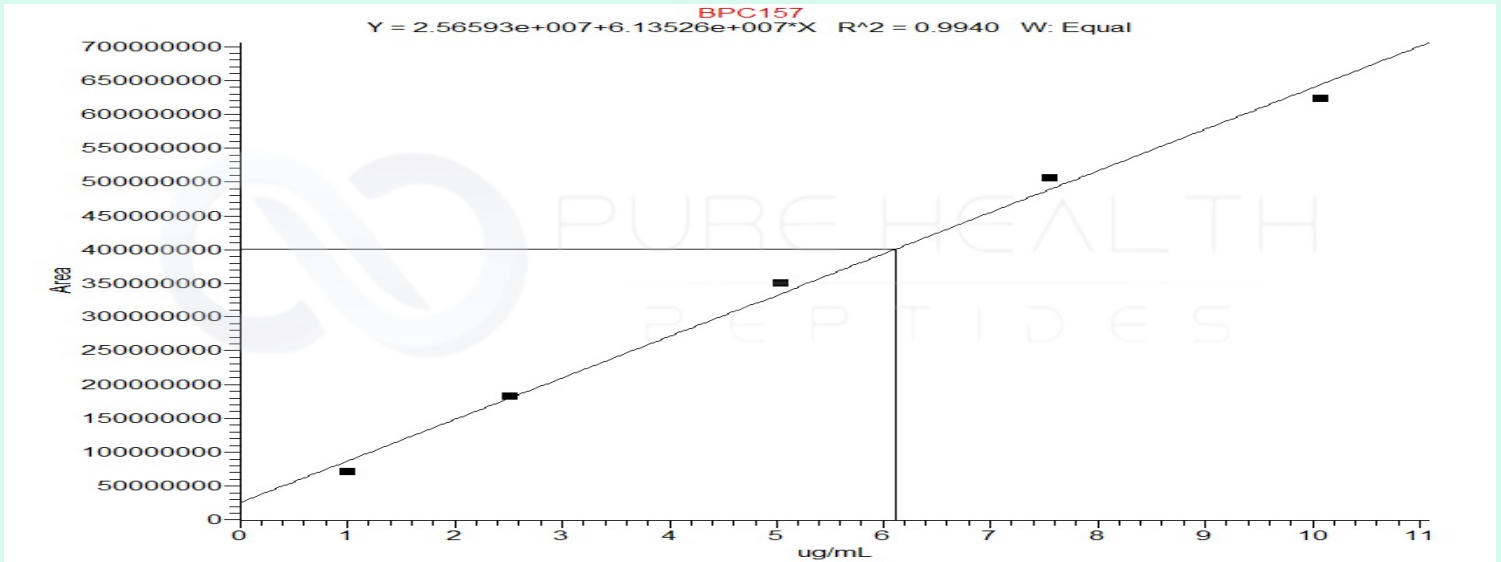
# Full Scan Mass Spectrometry Analysis

Syntera-BPC157-10mg-01 #315 RT: 2.74 AV: 1 NL: 9.57E7

T: FTMS + p ESI Full ms [200.0000-2000.0000]



## Calibration Curve



### Analysis Performed by

Dr. Roberto Marin  
Analytical Chemist  
contact@bioregen.com

COA #12423  
Security Key **PUREHEALTH**  
bioregen.com/verify



*Roberto Marin*

Client: **Pure Health Peptides**  
 info@purehealthpeptides.com  
 www.purehealthpeptides.com

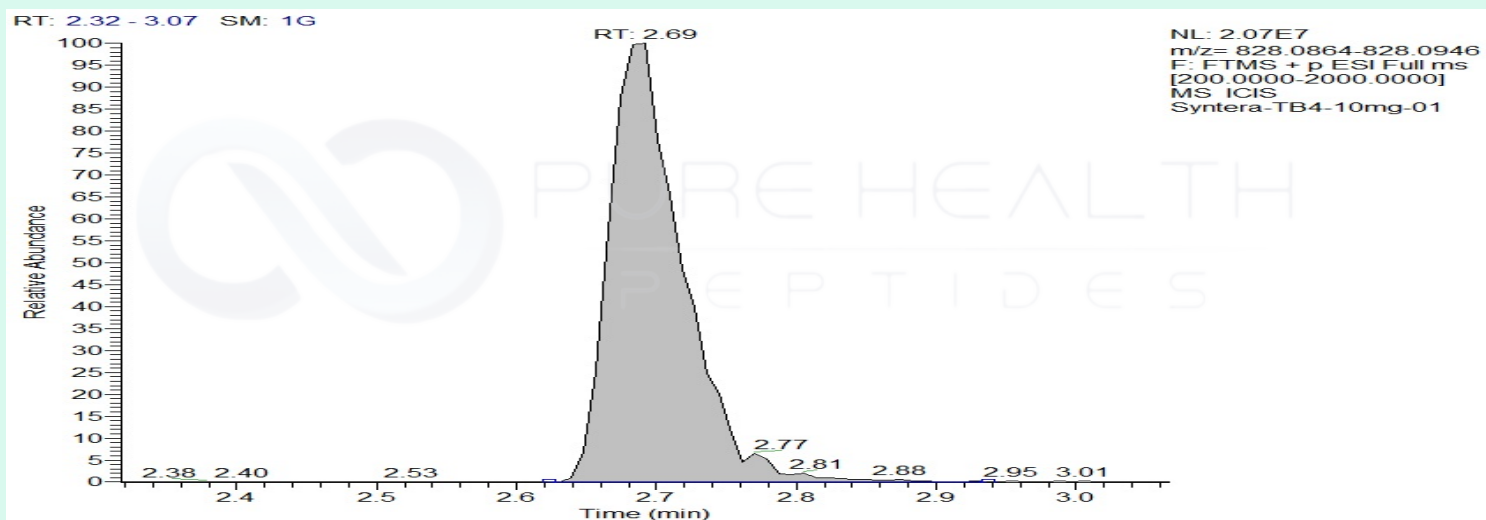
Sample received: **03/02/26**  
 Analysis conducted: **03/03/26**

Compound:	BPC-157/TB4 Blend	CAS:	77591-33-4
Batch/Lot #:	SYN-022626	Formula:	C212H350N56O78S
Appearance:	White lyophilized powder	Mol Wt:	4963 g/mol

**Method:** Qualitative and Quantitative chemical analysis by Ultra High Performance Liquid Chromatography with Mass Spectrometry  
**Pubchem CID:** 45382195  
 TB4 | C212H350N56O78S | CID 45382195

	Specification	Result	
Identity Test:	Thymosin Beta 4	<b>Thymosin Beta 4</b>	<b>Conforms</b>
Quantity:	10 mg	9.39 mg	<b>Conforms</b>
Purity:	>99%	<b>99.87%</b>	<b>Conforms</b>

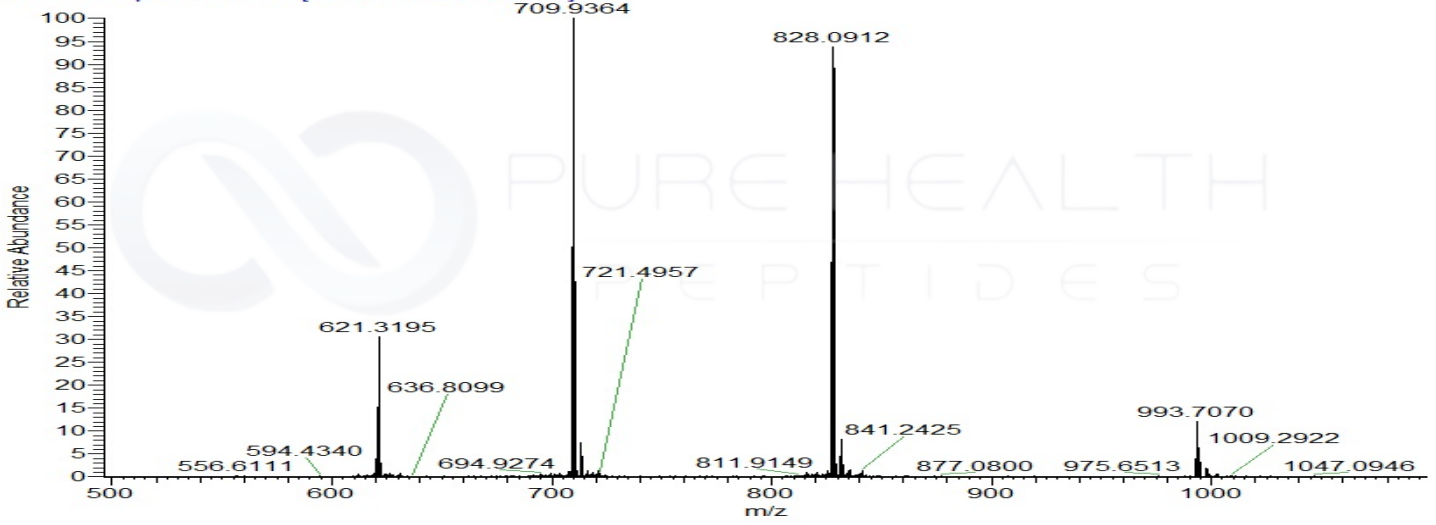
### LC-MS Chromatogram: Retention Time and Peak Analysis



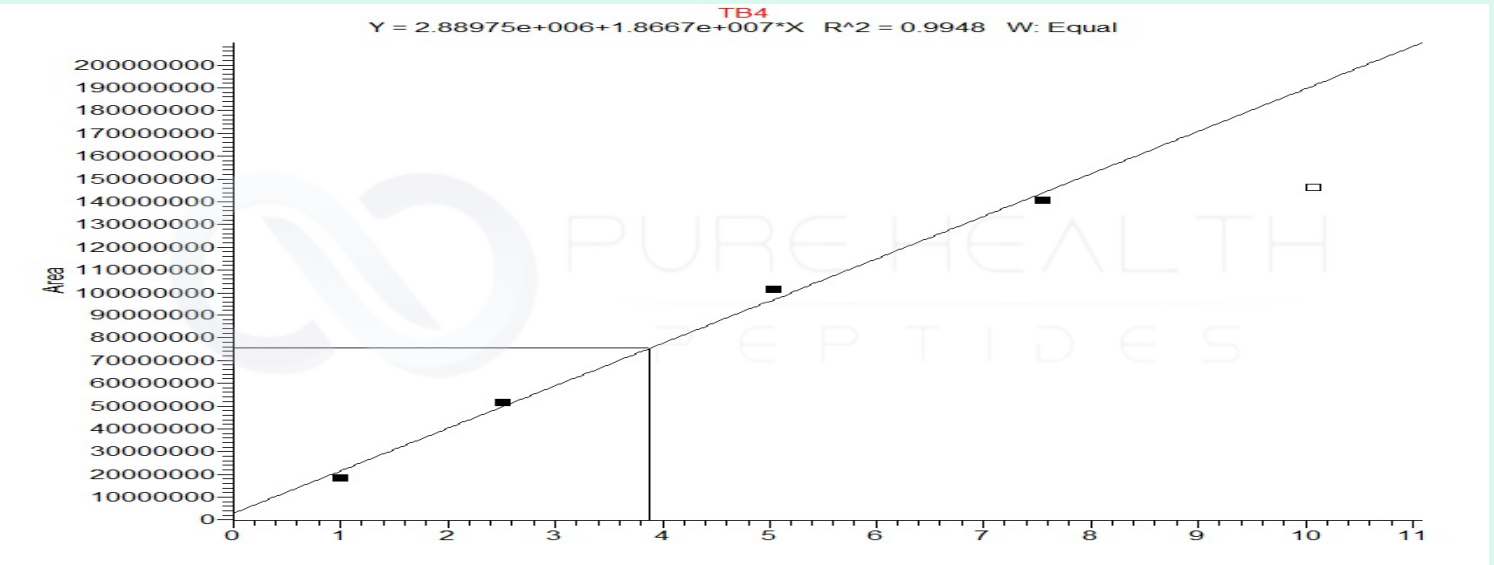
# Full Scan Mass Spectrometry Analysis

Syntera-TB4-10mg-01 #309 RT: 2.69 AV: 1 NL: 2.15E7

T: FTMS + p ESI Full ms [200.0000-2000.0000]



## Calibration Curve



### Analysis Performed by

Dr. Roberto Marin  
Analytical Chemist  
contact@bioregen.com

COA #12423  
Security Key **PUREHEALTH**  
bioregen.com/verify



*Roberto Marin*