

Client: **Pure Health Peptides**  
 info@purehealthpeptides.com  
 www.purehealthpeptides.com

Sample received: **03/18/26**  
 Analysis conducted: **03/20/26**

Compound:	Retatrutide	CAS:	2381089-83-2
Batch/Lot #:	SYN-030926	Formula:	C221H342N46O68
Appearance:	White lyophilized powder	Mol Wt:	4845.444 g/mol

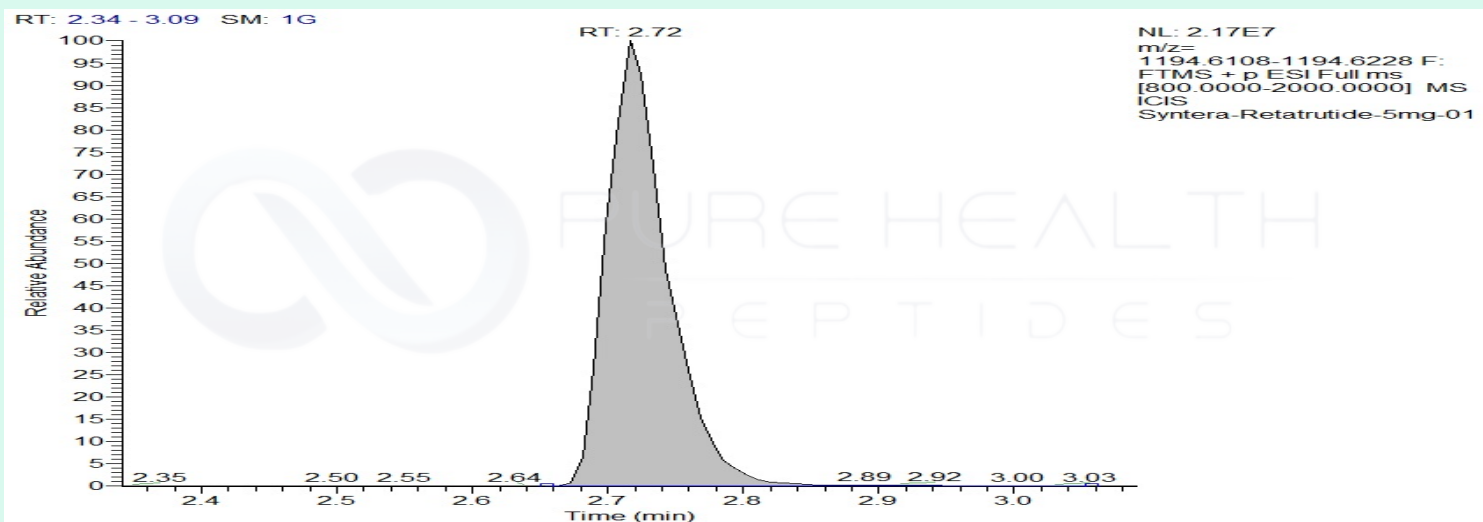
**Method:** Qualitative and Quantitative chemical analysis by Ultra High Performance Liquid Chromatography with Mass Spectrometry

**Pubchem CID:** 171390338

Retatrutide | C221H342N46O68 | Pubchem CID 171390338

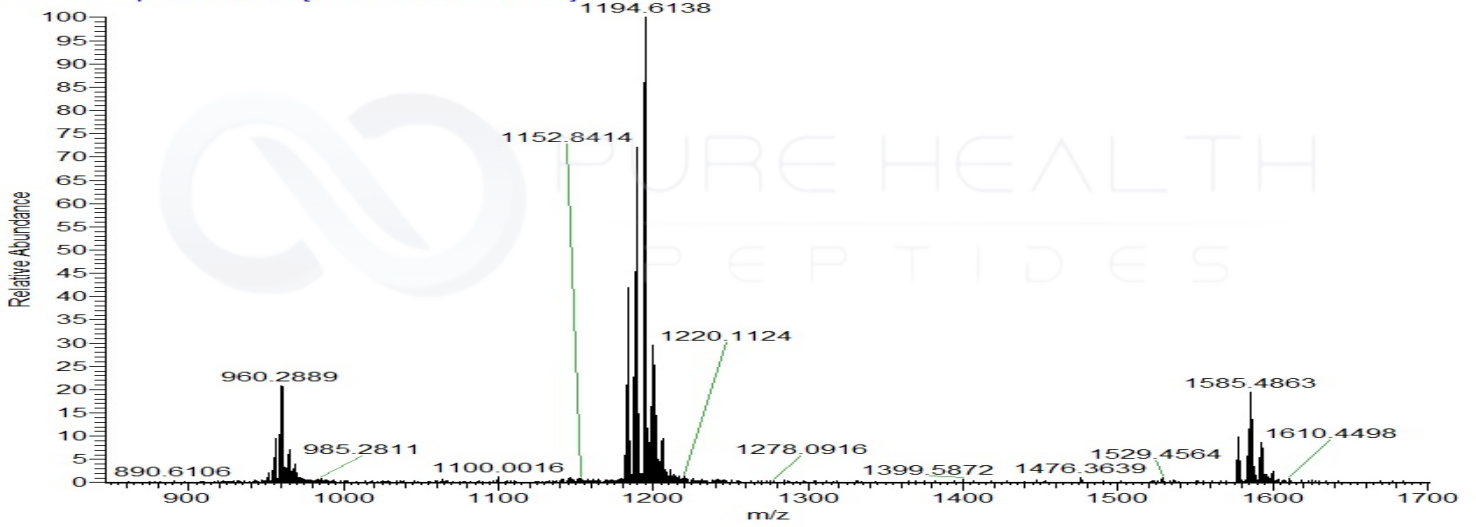
	Specification	Result	
Identity Test:	Retatrutide	<b>Retatrutide</b>	<b>Conforms</b>
Quantity:	5 mg	5.3 mg	<b>Conforms</b>
Purity:	>99%	<b>99.54%</b>	<b>Conforms</b>

### LC-MS Chromatogram: Retention Time and Peak Analysis

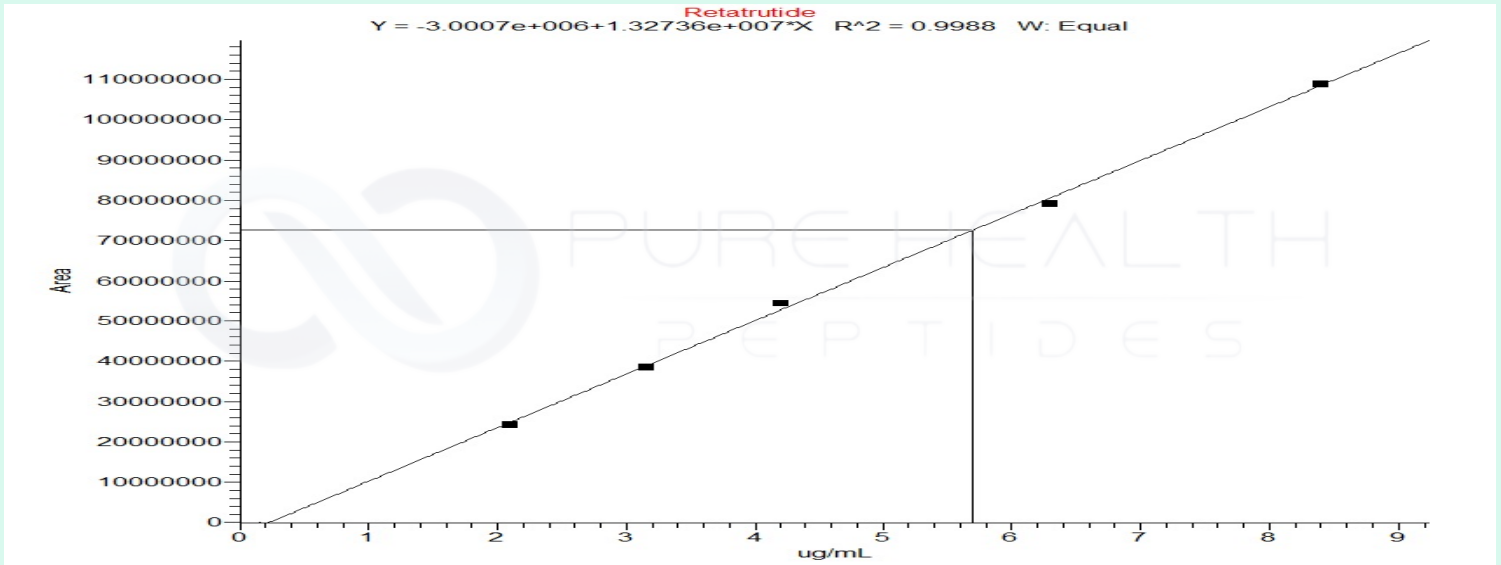


# Full Scan Mass Spectrometry Analysis

Syntera-Retatrutide-5mg-01 #312 RT: 2.72 AV: 1 NL: 2.09E7  
T: FTMS + p ESI Full ms [800.0000-2000.0000]



## Calibration Curve



### Analysis Performed by

Dr. Roberto Marin  
Analytical Chemist  
contact@bioregen.com

COA #12531  
Security Key **PUREHEALTH**  
bioregen.com/verify



*Roberto Marin*