

Client: Pure Health Peptides
info@purehealthpeptides.com
www.purehealthpeptides.com

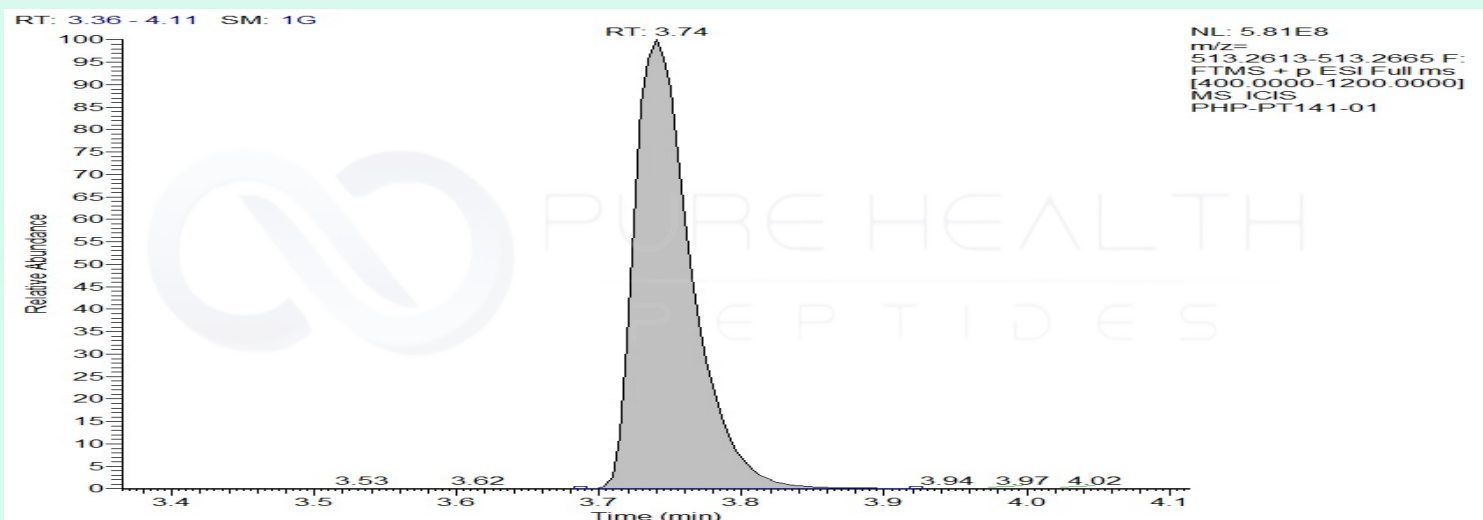
Sample received: **10/10/25**
Analysis conducted: **10/22/25**

Compound:	PT-141	CAS:	189691-06-3
Batch/Lot #:	TUY-101025	Formula:	C50H68N14O10
Appearance:	White lyophilized powder	Mol Wt:	1025.182 g/mol

Method: Qualitative and Quantitative chemical analysis by Ultra High Performance Liquid Chromatography with Mass Spectrometry
Pubchem CID: 9941379
PT-141 | C50H68N14O10 | CID 9941379

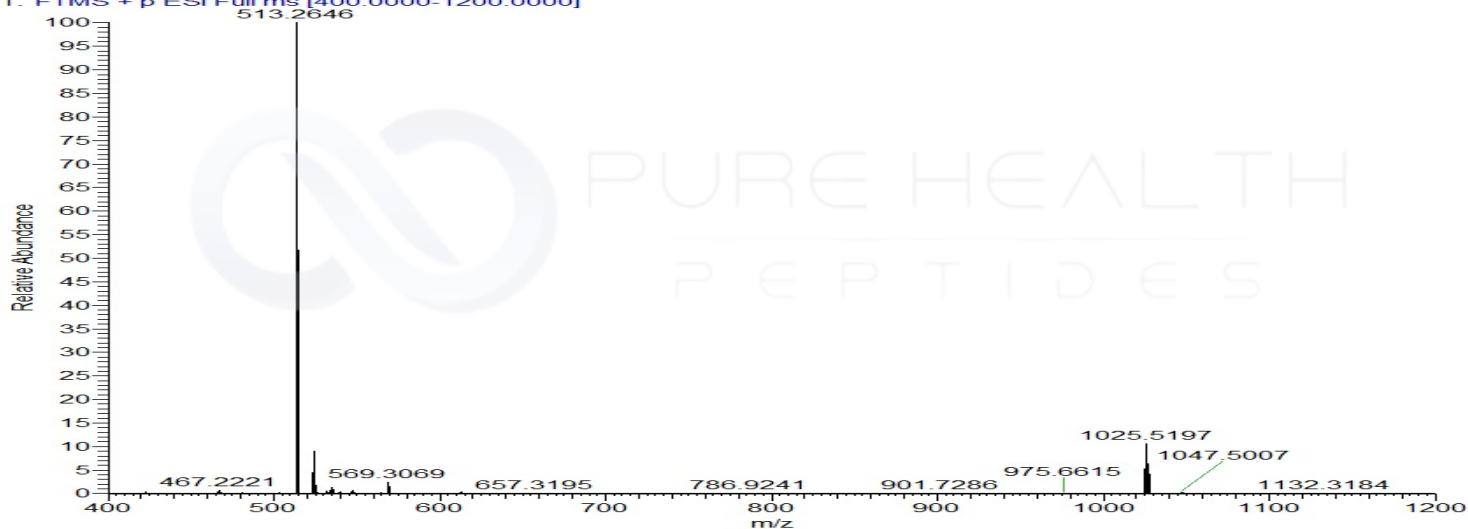
	Specification	Result	
Identity Test:	PT-141	PT-141	Conforms
Quantity:	10 mg \pm 20%	12.4 mg	Conforms
Purity:	>99%	99.89%	Conforms

LC-MS Chromatogram: Retention Time and Peak Analysis

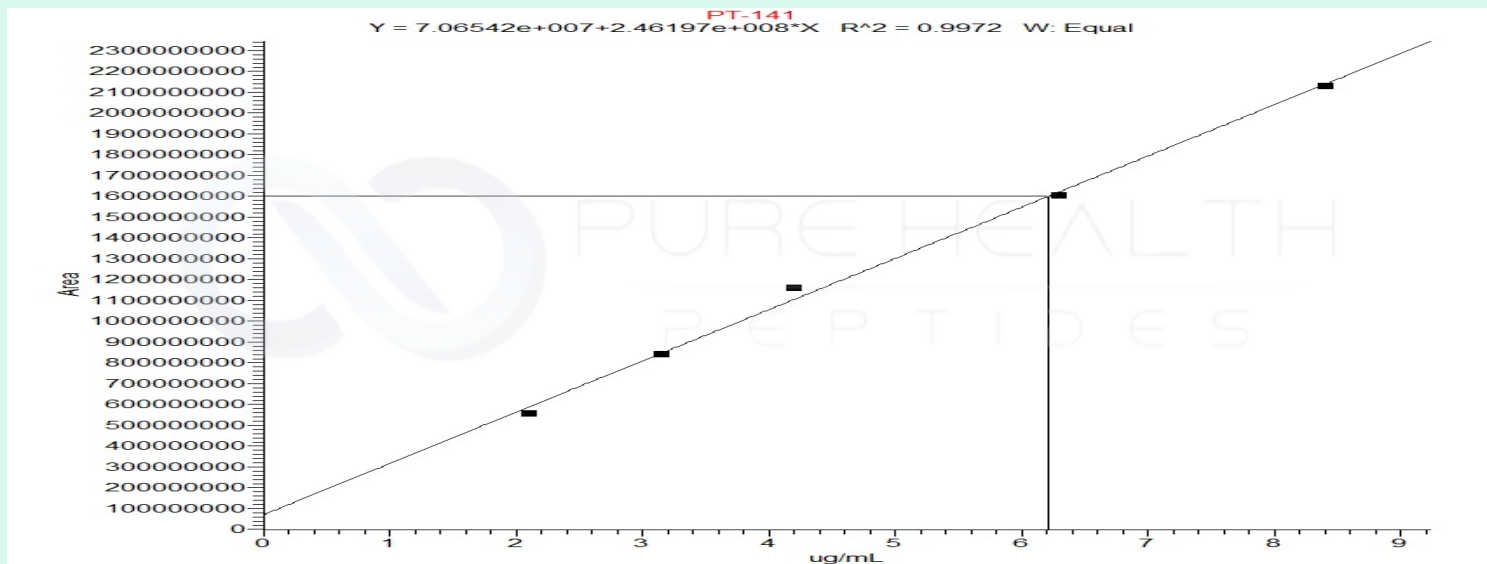


Full Scan Mass Spectrometry Analysis

PHP-PT141-01 #456 RT: 3.74 AV: 1 NL: 5.67E8
T: FTMS + p ESI Full ms [400.0000-1200.0000]



Calibration Curve



Analysis Performed by

Dr. Roberto Marin
Analytical Chemist
contact@bioregen.com

COA #11187
Security Key **PUREHEALTH**
bioregen.com/verify

Roberto Marin

